



WyreStorm

PRODUCT GUIDE

2024

Contents

The WyreStorm Difference	1	Matrix Solutions	26
WyreStorm Going Green	2	4K60 HDBaseT Switchers	26
Our Commitment to Your Security	4	4K60 HDMI Switchers	30
Our Technologies	5	Matrix Kits	32
AV over IP	6	Splitters	35
NetworkHD 600 Series (SDVoE)	8	HDMI & Active Optical Cables	36
NetworkHD 500 Series (4K60 HDR)	9	Extender Solutions	40
NetworkHD 400 Series (4K HDR)	10	WyreStorm Essentials	44
NetworkHD 100 Series (1080p)	11	WyreStorm Office	48
Syigma Device Management	12		
NetworkHD Series Controller	14		
Rack Mounting Solutions	14		
Touch & Companion Control	15		
Unified Communications	16		
Synergy Presentation Solutions	20		
Catalog & Control	25		

The WyreStorm Difference



Your Multi-Technology, Cross-Market Specialists

We're a leading manufacturer of award-winning 4K and full HD AV signal distribution and control solutions for Pro AV commercial, residential/custom install and retail markets. Specializing in providing innovative single-platform and hybrid solutions, WyreStorm products are developed to minimize system complexity and connectivity for increased ease of installation and reliability, while offering exceptional performance and functionality for the best value and end-user experience.



Only Manufacturer Offering Clear, Unbiased Advice

In an industry of bandwagon-jumping, self-promotion and exaggeration, we simply prefer to deal in facts so you'll never find us making a claim about our company or products that isn't technically accurate. We aim to demystify what can be a confusing landscape with clear, impartial advice focused on dealer and end-user satisfaction to ensure the right technology is used and the right application achieved.



Modular Product Architecture for Ultimate Install Options

Out-of-box doesn't fit all applications - build to your specification. The modular architecture of our matrix switchers and NetworkHD™ AV over IP products enable solutions to be perfectly tailored and effortlessly expanded to applications, no matter the size, budget, function or complexity of the project.



Six Technology Platforms and Counting

When it comes to AV distribution, we believe there's no such thing as one size fits all. Our multi-platform approach to product design spans HDMI™, HDBaseT™, Fiber, AV over IP and SDVoE™. And with more technologies always on the horizon, we're all about giving the integrator the options they need to provide the best possible solution for their AV project.



Global Network of Offices, Sales Advisors & Support

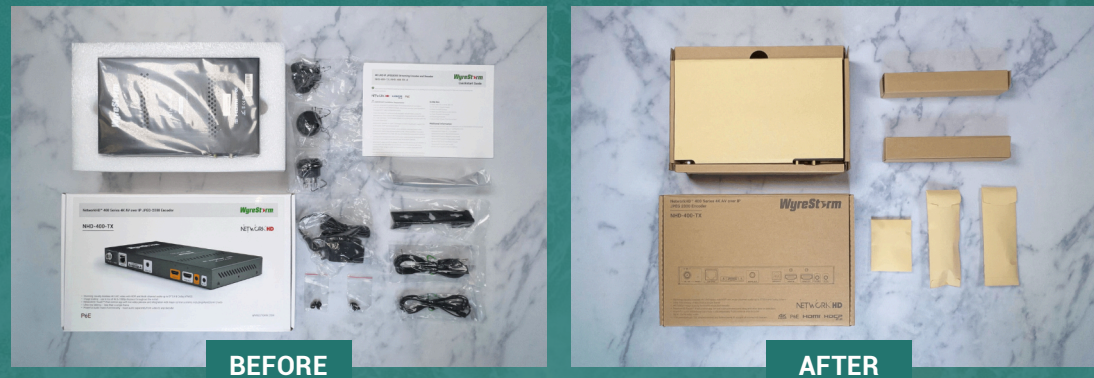
With offices in the US, UK, India and the Middle East, our own R&D and production facilities in Asia, and an ever-growing network of distribution partners throughout the world, WyreStorm is ideally placed as a total solutions provider capable of serving customers wherever they may be.



All WyreStorm Pro AV and Installer Solution products include a 5 Year limited warranty for one of the highest levels of coverage available and ultimate peace of mind.

WYRESTORM GOES GREEN

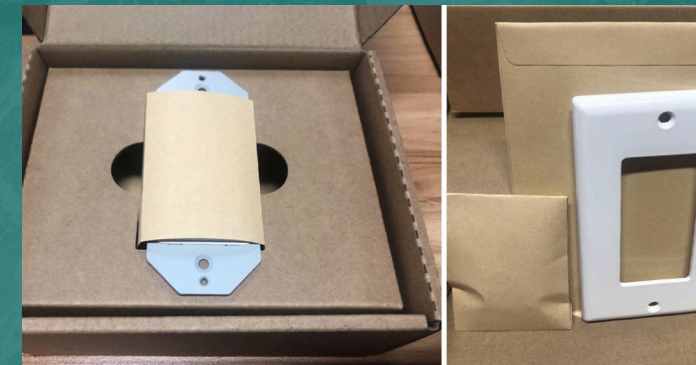
We all share one thing in common, and that is this earth. At WyreStorm, we believe in efforts to help save the earth & aim to contribute to a healthier planet, one box at a time. Since 2018, WyreStorm has removed the use of plastics and other harmful substances to our earth whenever possible.



Plastic bags for individual pieces, such as mounting brackets, screws, power cables, and plug adapters, have been repackaged with recyclable paper bags. Furthermore, the plastic bag used to cover the product has been replaced with a paper sleeve. The box itself has also changed, leaving behind a plastic coated box and replacing it with a cardboard version that is fully recyclable. As a result of these changes, WyreStorm has been able to make all of their products fully recyclable.



WyreStorm will be featuring the following graphics on every package that is 100% single use plastics free or use biodegradable plastic packaging.



HELP US SAVE THE EARTH & DO YOUR PART

Join WyreStorm in Going Green and help recycle our packaging whenever possible. We additionally encourage your participation in conserving water & volunteering for cleanups in your local community.

WyreStorm will be featuring the following graphics on packages that are eco-friendly. For a complete list of eco-friendly packaged products, click the button below.

WYRESTORM'S MISSION ON GOING GREEN

By replacing plastics with cardboard, implementing Kraft packing materials, and using bagged items made from biodegradable paper, we are happy to share 2/3 of our product packaging is eco-friendly.

By developing eco-friendly packaging, WyreStorm has helped SUP from being produced and ending up in a landfill, as well as water from being used in plastics production. Our ultimate goal is to be 100% Single Use Plastics Free in all packaging.





OUR COMMITMENT TO YOUR SECURITY

In today's world, the majority of Pro AV devices, whether it be an HDBaseT matrix, presentation switcher, or an AV over IP solution, exist on the network. While it may be easy to connect a device via an ethernet cable to a switch or router, it's critical to understand how that device is capable of being secure. At WyreStorm, we recognize the need to be secure and take it seriously. We want you and your customers to feel confident that when a WyreStorm product exists on a network it will not fall susceptible to malicious activity. Below are protocols that we have implemented on a number of solutions and how they keep WyreStorm devices secure.

Transport Layer Security (TLS)

Protects and secures API access to devices. A widely adopted security method intended to facilitate private communication between devices on a network.

SSH (Secure Shell)

Another method to protect and secure API access. Can also be used for secure data transfer over a network such as firmware updates.

AES Encryption

Is used to encrypt audio and video streams. AES is implemented in hardware & software solutions around the world to protect sensitive data, including the U.S. Government.

HTTPS

HTTPS uses Transport Layer Security (TLS) to encrypt the data that is shared between a web server and a client device, such as a computer.

PKI Authentication

Ensures access to a device only from the intended user using digital signatures and certificates for authentication.

Our Technologies

NETWORK HD AV OVER IP



- Distribute high bandwidth 4K HDR content within medium-to-large footprint installs
- Ideal for distribution & switching/routing of an infinite amount of sources/displays
- Supports 4K HDR transmissions up to 100m/328ft or 300m/984ft over fiber
- Capable of supporting 4K/60 4:4:4 and HDR content
- Support for video, multichannel audio, RS-232 and bidirectional IR control, remote powering of devices and Ethernet passthrough over a dedicated network
- An ever expanding line of solutions available, tailored to any type of installation
- All Encoders and Decoders powered using PoE from supporting network switch
- Easy display switching and source control with NetworkHD Touch and Companion App



HDBT™



- Distribute high bandwidth 4K HDR content within medium-to-large footprint installs
- Ideal for centralized distribution & switching/routing of up to 16 sources/displays
- Supports 4K UHD transmissions up to 70m/230ft or 1080p to 100m/328ft
- Capable of supporting 4K/60 4:4:4 and HDR content
- Support for video, multichannel audio, RS-232 and bidirectional IR control, remote powering of devices and Ethernet passthrough over a dedicated network
- Modular, multi-format transmission cards available for matrix switchers
- Easy to install on systems up to a 16x16
- Huge variety of WyreStorm matrix switcher and extender solutions available



HDMI®



- Still the best method of distributing and switching uncompressed HDMI 2.0 18Gb 4K/60 4:4:4, but limited to small footprint installations
- Provides independent 4K-to-1080p downscaler on each HDMI output
- Self-contained plug-and-play AV solution, but with limited ability to scale up inputs and outputs
- Use WyreStorm Hybrid Active Optical HDMI cables to overcome distance
- Limitations and to pass CEC control signals from the matrix



FIBER



- The future of content delivery - optical cable distributes high bandwidth 4K content point-to-point or part of larger HDMI, HDBaseT or AV over IP distribution
- Uses variable compression to support transmission of 18Gbps HDMI content for 4K/60 4:4:4 and HDR up to 300m/984ft
- Compatible with High Frame Rate HDR at 60Hz available on the latest UHD Blu-ray discs or games consoles
- Developments in cable/module technology means fiber is cheaper and easier to terminate than ever
- Immune to EM and RF interference, for a superior delivery compared to copper in electronically "noisy" environments, such as industrial or retail
- Fiber included on NHD-600-TRXF, NHD-500-TX/RX and EXF-300-H2 extender.



NETWORKHD

Three AV over IP Technologies. Infinite applications.

600 Series



- Pinnacle of AV distribution offering fully lossless 4K/60 and 4:4:4 / HDR over 10GbE Network with Genlock and zero latency – the compromise is higher bandwidth requiring a 10GbE Network
- Uniqually in AV over IP the Transceiver version allows you to transmit and receive A/V signal simultaneous through a single device or be programmed to act as a dedicated TX or RX.
- Decentralized system design architecture offers ultimate scalability
- Value-adding features include discrete AV matrix switching, 4K/2K scaling, multi-channel audio up to DTS:X and Dolby Atmos, PCM audio downmix, embedding/deembedding with DAC/ADC
- Broadcast quality, multi-view and video wall up to 8x8 with bezel correction
- Ultra-fast seamless source switching
- 1GbE passthrough, IR/RS-232 routing/generation and analog audio routing
- Bidirectional IR/RS-232 with major third party integration

400/500 Series



- Cost-effective, high quality delivery 4K HDR over a 1GbE Network with low latency down to a single video frame – the compromise is slightly higher bandwidth demands
- Ideal for decentralized system designs
- Value-adding features include 4K/2K scaling, multi-channel audio up to DTS:X and Dolby Atmos, audio routing separate from video, IR pass-through, video wall up to 16x16 with rotation for landscape and portrait processing
- CEC one-touch play/standby
- Bidirectional RS-232 with major third party integration
- Free iPad control app enables access to an entire system with live video previews of all sources and selections
- Empowered with a Dante audio, it can benefit from the streaming of source audio from an encoder HDMI or analog port direct to Dante compatible audio amplifiers, DSPs or mixing consoles.

100 Series



- Lowest cost, lowest bandwidth delivery of full HD over a 1GbE Network – the compromise is slightly higher latency
- Ideal for decentralized system designs
- Plug-and-play modular PoE architecture easily scales up to the largest deployments
- Value-adding features include seamless switching, video wall processing up to 16x16, multi-window or PiP on a single screen with 4K scaling
- CEC one-touch play/standby, full RS-232 control of displays with major third party integration
- Free iPad control app enables access to an entire system with live video previews of all sources and selections.

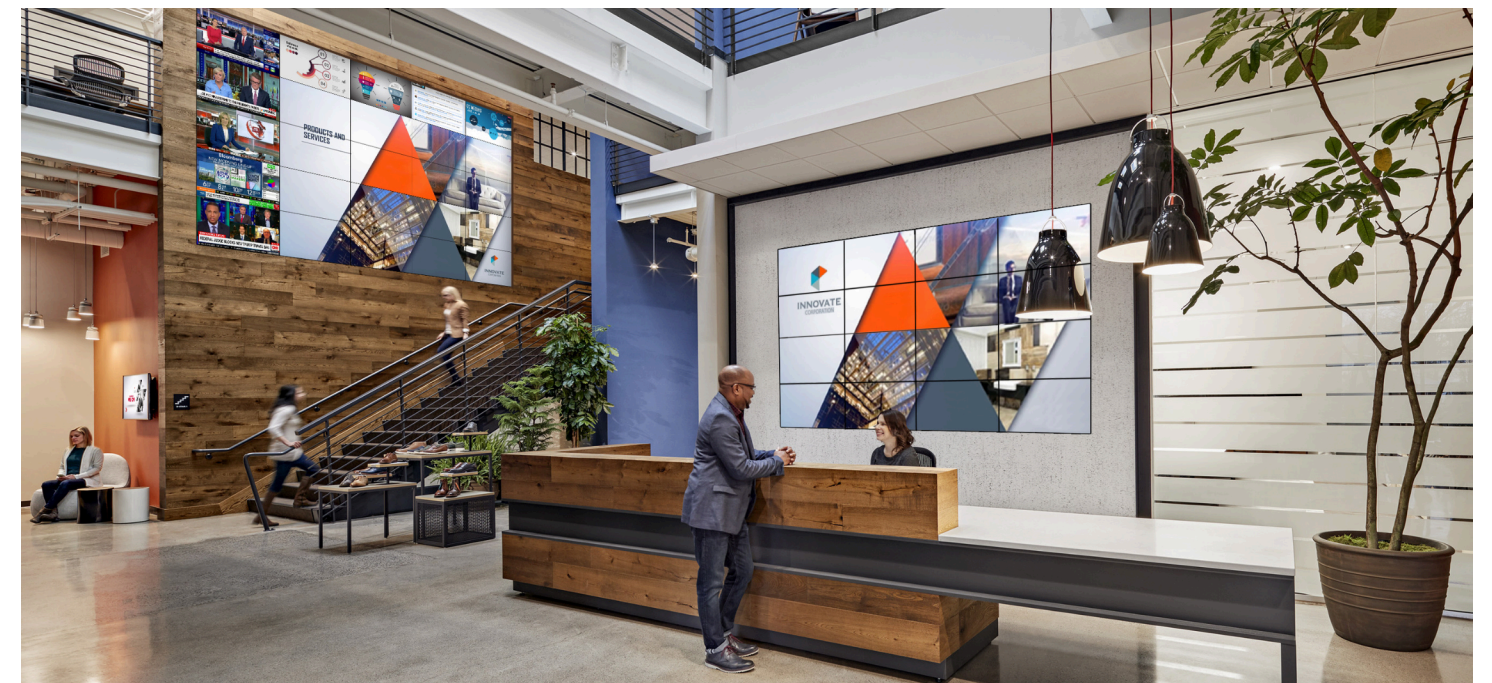
All three NetworkHD™ platforms share the same unified setup and admin environment

NETWORKHD TOUCH

A FREE, PRECONFIGURED AND POWERFULLY SIMPLE CONTROL INTERFACE FOR NETWORKHD AV OVER IP PRODUCTS.

WHAT IS THE RIGHT SOLUTION FOR YOUR INSTALL? WYRESTORM HAS YOU COVERED.

	100 Series	400 Series	500 Series	600 Series
Max. Resolution	1920x1200 (1080p)	4K UHD	4K UHD/DCI	4K UHD/DCI
Compression Codec	Low Bandwidth	JPEG 2000	JPEG 2000	SDVOE
Max. 4K Timing	30fps 4:2:0	60fps 4:2:0	60fps 4:4:4	60fps 4:4:4
Multichannel Audio	✗	✓	✓	✓
Min. Latency	250ms (High Quality Mode) 80ms (Low Latency Mode)	16ms @ 1080p	16ms @ 4K 60	Zero Latency (GenLock)
PoE	✓	✓	✓	✓ PoE+
Video Wall	✓	✓	✓	✓
Mosaic Video Walls	✓	✓	✓	✗
Bezel Gap Correction	✓	✓	✓	✓
Image Rotation	✓	✓	✓	✗
Bandwidth Control	✓	✓	✓	✗
CEC	✓	✓	✓	✓
USB	✗	✓	✓	✓
Dolby Vision/HDR	✗	HDR 30Hz	DV 60Hz	DV 60Hz
Fast Switching	✓	✗	✓	✓
Max. Video Wall Size	16x16	16x16	16x16	8x8
Multiview	With NHD-150-RX	With NHD-0401-MV	With NHD-0401-MV	✓
Network Type	1Gb Multicast	1Gb Multicast	1Gb Multicast	10Gb Multicast
Peak Bandwidth	30 Mb/s per TX	850 Mb/s per TX	850 Mb/s per TX	9Gb/s per TX
Fiber	✗	✗	✓	✓
Dante/AES67	✗	✓	✓	✓
Warranty (years)	5	5	5	5
Drivers	Crestron™, AMX™, RTI™, Control4™	Crestron™, AMX™, RTI™, Control4™	Crestron™, AMX™, RTI™, Control4™	Crestron™, AMX™, RTI™, Control4™



NETWORKHD™ 600 Series (SDVoE)

Lossless 4K/60 4:4:4 and HDR over 10GbE using SDVoE technology

The NetworkHD™ 600 Series offers the ultimate AV over IP platform for when only the absolute best image quality will do. Supporting highly scalable, secure and fully lossless high bandwidth video content alongside multi-channel audio and a variety of connectivity and control options. The 10GbE system is easily managed in a flexible, unified software environment for the ultimate AV over IP experience for commercial and high-end residential applications.

2160p
4:4:4 60

NetworkHD™ 600 Series 4K60 4:4:4 10GbE SDVoE Transceiver

NHD-600-TRX

- Operates as a transceiver that can encode and decode simultaneously
- Full HDMI 2.0 encoding/decoding up to 4K60 4:4:4 with Dolby Vision/HDR compatibility
- 3x USB 1.1 HID ports for extension of keyboard & mouse applications
- Zero latency A/V transmissions using SDVoE technology
- Native video wall and multiview processing
- Secure communications using AES, SSH and TLS protocols



2160p
4:4:4 60

NetworkHD™ 600 Series 4K60 4:4:4 10Gb SDVoE Fiber Transceiver

NHD-600-TRXF

- Operates as a transceiver that can encode and decode simultaneously
- Fiber transport supporting up to 300m distance using OM3 multimode
- Full HDMI 2.0 encoding/decoding up to 4K60 4:4:4 with Dolby Vision/HDR compatibility
- Native video wall and multiview processing
- Secure communications using AES, SSH and TLS protocols



2160p
4:4:4 60



NetworkHD™ 4K60 10GbE SDVoE AV over IP Encoder with Dante Audio

NHD-610-TX

- Full HDMI 2.0 encoding up to 4K60 4:4:4 with Dolby Vision/HDR compatibility
- USB 1.1 HID port for extension of keyboard & mouse applications
- Dante/AES67 audio output on NHD-610-TX encoder
- NHD-610-RX decoder capable of video wall and multiview processing
- Secure communications using AES, SSH and TLS protocols



NETWORKHD™ 500 Series (4K60 HDR)

4K/60 4:4:4 and HDR over 1GbE or Fiber using JPEG 2000 technology

The NetworkHD 500s series offers a full HDMI 2.0 AV over IP solution. The 500 series is capable of encoding up to 4K60 4:4:4 8bit and support for high framerate Dolby Vision, HDR10 and HLG content. Advanced processing features include video walls with bezel correction, incredibly fast matrix switching, and ultra-low latency distribution. The 500 series also include support for ARC for residential applications along with high-speed USB routing for commercial installs. The best part is that all of this is achieved over a 1GbE network.

2160p
4:4:4 60



NetworkHD™ 4K60 4:4:4 JPEG 2000 AV over IP Encoder and Decoder

NHD-500-TX | NHD-500-RX

- Full HDMI 2.0 encoding/decoding up to 4K60 4:4:4 with Dolby Vision/HDR compatibility
- Flexible output supports either Ethernet or Fiber connections (300m w/ OM3 fiber)
- USB connectivity for extension and routing of USB peripheral devices
- ARC (Audio Return Channel) capable for distributing audio from smart TVs
- NHD-500-RX decoder capable of 16x16 video wall processing, including mosaic
- Secure communications using AES, SSH and TLS protocols



2160p
4:4:4 60



NetworkHD™ 500 Series Lite 4K60 4:4:4 AV over IP Encoder and Decoder

NHD-500-E-TX | NHD-500-E-RX

- Supports encoding and decoding of full HDMI 2.0 content up to 4K60 4:4:4 8bit
- Compatible with Dolby Vision, HDR10 & HLG content up to 60Hz
- Essential connectivity for streamlined audio and video distribution
- Video wall processing up to a 16x16 with bezel adjustments
- Balanced audio de-embed for connecting external audio systems



NetworkHD™ 500 Series 4K60 4:4:4 JPEG2000 In-Wall Encoder

NHD-500-IW-TX

- Supports encoding full 4K60 4:4:4 8bit or RGB content
- 2-Gang US style in-wall form factor
- HDMI and USB-C Switchable inputs
- USB extension and routing for peripheral USB devices
- Dedicated stereo input for connecting external audio devices



NetworkHD™ 500 Series 4K60 4:4:4 JPEG 2000 Encoder with Dante/AES67 Audio

NHD-500-DNT-TX

- Supports encoding full HDMI 2.0 content up to 4K60 4:4:4 8bit
- Compatible with Dolby Vision, HDR10 & HLG up to 60Hz
- Integrated Dante/AES67 2CH audio output
- Dedicated Dante LAN port for easy connection to separate Dante network
- USB extension and routing for connecting peripherals USB components



In a significant development that underscores our commitment to regulatory compliance and market expansion, we are thrilled to announce that our award-winning AV over IP products, the NHD-500 series and NHD-CTL-PRO, are now Trade Agreements Act (TAA) Compliant, expanding into the US Government Market.

NETWORKHD™ 400 Series (4K HDR)

Low latency 4K over 1GbE with scaling, multichannel audio and video wall using JPEG 2000 technology

The NetworkHD™ 400 Series offers stunning 4K HDR video, multi-channel audio support and 4K/2K auto-scaling to seamlessly handle distribution of mixed resolution sources, content and display devices over a 1GbE network. Featuring incredibly low latency matrix switching and video wall capabilities, the 400 Series is the ideal AV over IP solution for systems where high quality and low latency are key requirements; making it perfect for both residential and commercial applications.



NetworkHD™ 400 Series 4K AV over IP JPEG 2000 Encoder and Decoder

NHD-400-TX | NHD-400-RX

- 4K encoding up to 4K60 4:2:0 with HDR10/HLG compatibility
- USB connectivity for extension and routing of USB peripheral devices
- Ultra-low, single frame latency
- NHD-400-RX decoder capable of 16x16 video wall processing, including mosaic
- Secure communications using AES, SSH and TLS protocols



NetworkHD™ 400 Series 4K AV over IP JPEG 2000 Encoder and Decoder

NHD-400-E-TX | NHD-400-E-RX

- 'Lite' versions of the NHD-400-TX/RX with only essential I/O
- 4K encoding up to 4K60 4:2:0 with HDR10/HLG compatibility
- Ultra-low, single frame latency
- NHD-400-E-RX decoder capable of 16x16 video wall processing, including mosaic
- Secure communications using AES, SSH and TLS protocols



NETWORKHD™ 100 Series (4K UHD)

Low bandwidth HD over 1GbE with video-wall and multiview processing using compression technology

The NetworkHD™ 100 Series utilizes low bandwidth, infinitely scalable technology with the addition of powerful video wall support up to 16x16 for the best all-round solution for commercial AV installations. A 100 Series encoder can either be paired with a 100 Series decoder for matrix switching to individual screens or for video wall decoding, with both decoders including HDMI and analog audio breakout outputs, or an NHD-150-RX decoder for multiview monitoring.



NetworkHD™ 100 Series 4K30 4:2:0 Encoder & Decoder

NHD-120-TX | NHD-120-RX

- Low bandwidth 4K @ 30Hz encoding
- Dual encoding options using low bandwidth technology
- Instant matrix switching with no freeze frames
- NHD-110-RX supports video wall processing up to 16x16
- Secure communications using AES, SSH and TLS protocols



NetworkHD™ 1080p HD Low Bandwidth AV over IP Encoder and Decoder

NHD-110-RX-S

- Treated with Sealoc's proprietary protection where the sensitive electronics are shielded from weather, adverse elements, and corrosive environments
- Powerful video wall processing supporting standard video wall configurations
- Image scaling ensures compatibility with mixed resolution displays
- Analog audio de-embed for easy connection to external audio DSP or amplifier



NetworkHD™ 400 Series In-Wall 4K AV over IP JPEG 2000 Encoder

NHD-400-TX-IW

- 2-Gang US style wall plate
- 4K encoding up to 4K60 4:2:0 with HDR10/HLG compatibility
- USB connectivity for extension and routing of USB peripheral devices
- Ultra-low, single frame latency
- Secure communications using AES, SSH and TLS protocols



NetworkHD™ 400 Series 4K AV over IP JPEG 2000 Encoder with Dante

NHD-400-DNT-TX

- NHD-400-TX with added Dante/AES67 network output
- Includes additional stereo audio input
- 4K encoding up to 4K60 4:2:0 with HDR10/HLG compatibility
- Ultra-low, single frame latency
- Secure communications using AES, SSH and TLS protocols



NetworkHD™ 100 Series 4K AV over IP Quad Encoder

NHD-124-TX

- Quad encoder helps reduce amount of separate components
- Combines all four inputs into a single ethernet output
- Low bandwidth 4K @ 30Hz encoding
- Interoperable with NHD-120-TX/RX
- Secure communications using AES, SSH and TLS protocols



NetworkHD™ 100 Series 4K60 4:2:0 MultiView Processor

NHD-150-RX

- Multiview processor supports up to 9 unique windows
- Fully customizable multiview layouts
- 4K output scaling
- Interoperable with NHD-120-TX and NHD-124-TX
- Secure communications using AES, SSH and TLS protocols



NetworkHD™ 100 Series 4K In-Wall Encoder

NHD-120-IW-TX

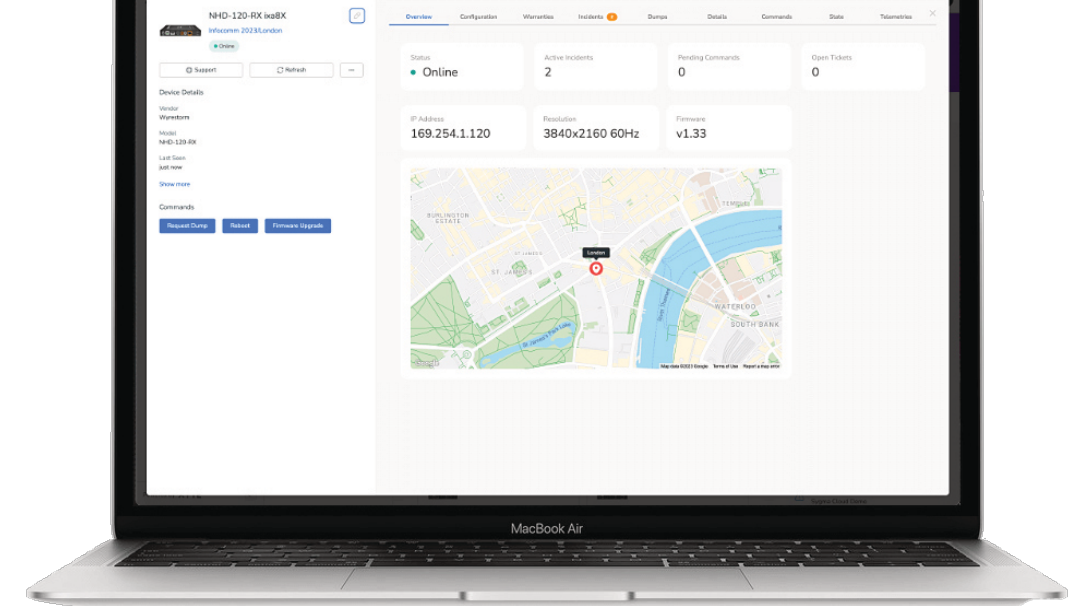
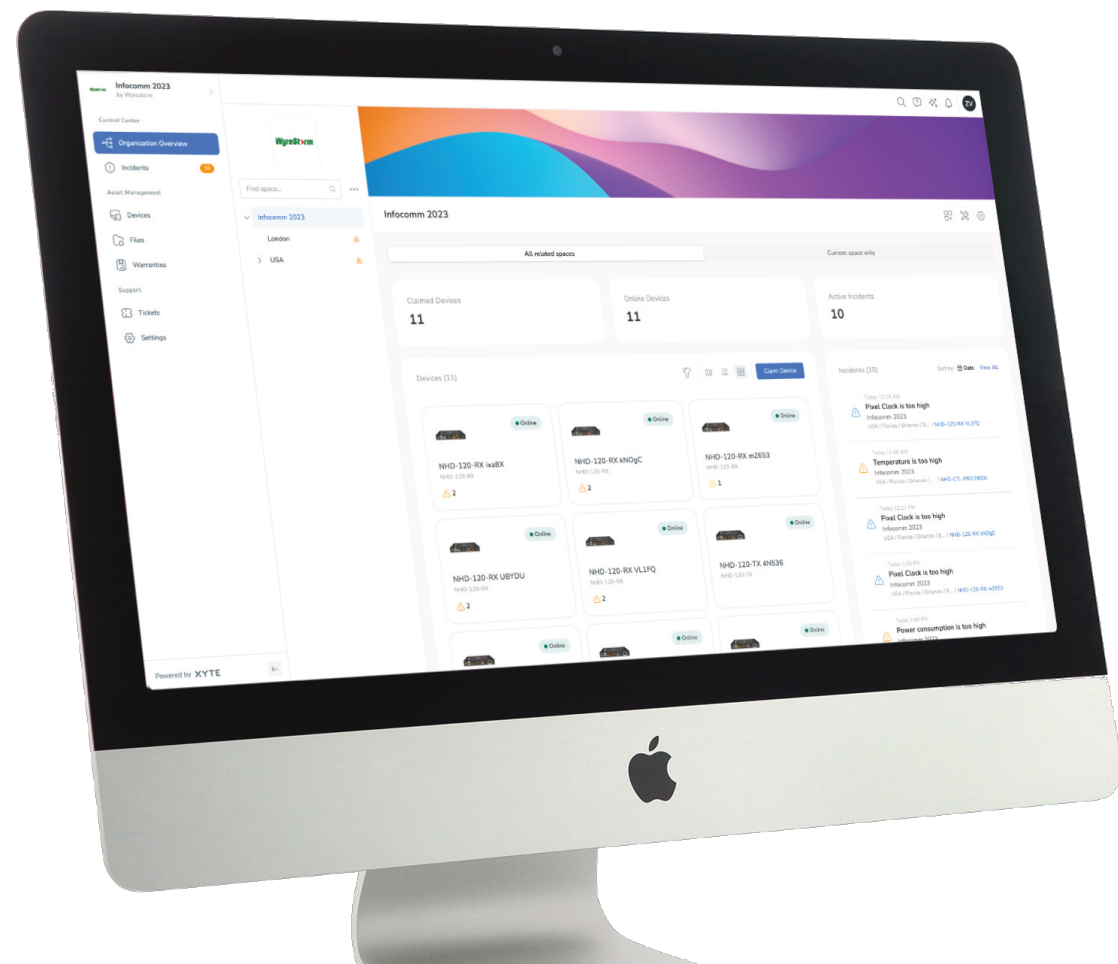
- 2-Gang US style in-wall form factor, PoE power
- Seamless video switching – no black screens or freeze frames
- Transmits AV streams up to 4K 30Hz
- Analog audio de-embed for easy connection to external audio DSP or amplifier
- Ethernet port on the front panel provides a stable network connection to connected devices without the need for extra wiring pulled from the switch, ensuring a hassle-free setup



WYRESTORM'S FREE CLOUD DEVICE MANAGEMENT

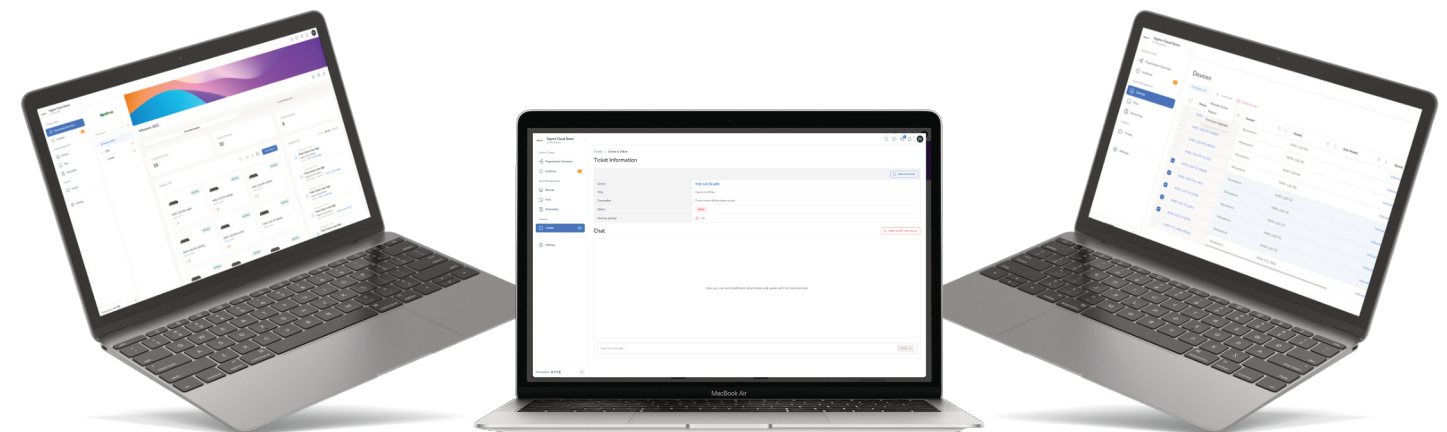
Syigma Cloud Device Management is an advanced online platform that empowers users to effortlessly monitor their devices from anywhere in the world.

With a comprehensive suite of features, it enables seamless device control, firmware updates, and access to online support, all in one centralized location.



STAY CONNECTED, EVERYWHERE

Stay connected to your devices at all times, no matter where you are. Syigma Cloud Device Management allows you to remotely monitor the status, performance, and health of your devices in real-time. Instantly identify any issues or anomalies and take immediate action.



FIRMWARE UPDATES. SIMPLE

Keep devices up to date with the latest enhancements and security patches. Syigma simplifies the firmware update process, allowing you to remotely update multiple devices simultaneously, saving time and effort.

INSTANT ASSISTANCE AT YOUR FINGERTIPS

Experience seamless and real-time support with our Syigma Cloud platform's online support feature. Connect directly with our technical experts through live chat, enabling instant assistance and resolution of any questions, issues, or inquiries you may have, ensuring a smooth and uninterrupted user experience.

24/7 ONLINE SUPPORT

Access dedicated online support directly through the platform. Submit and track support requests, communicate with technical experts, and receive timely assistance to resolve any issues or queries you may have.

GLOBAL PROJECT MAP

Direct access to 24/7 dedicated online support through the Syigma platform. Submit tickets and track all of your support requests, communicate directly with our technical experts, and receive timely assistance to resolve any issues or queries you may have, such as setting up the software or linking the platform to your installation.

EFFORTLESS DEVICE CONTROL

Whether it's adjusting settings, activating features, or initiating commands, the platform provides intuitive controls to ensure your devices are performing optimally and meeting your specific requirements.

AUTOMATIC EMAIL NOTIFICATIONS

Rest assured that you'll be promptly notified of any issues with our Syigma Cloud platform through automatic email notifications. Be instantly informed of any potential problems or critical updates, allowing you to take immediate action and ensure the continuous and optimal performance of your monitored devices.



POE TOUCH

NETWORKHD™ Series Pro Controller

The NHD-CTL-PRO are innovative control interfaces that make the powerful NetworkHD system the most simple and quickest-to-configure AV over IP system available. Designed to be used with all NetworkHD systems to bridge the various encoders and decoders to a single, API-based connection point for use by a control processor or the NetworkHD Touch™ App. Additionally, they provide monitoring and remote access for Integrators via their on-board Web UI.

NHD-CTL-PRO v2

- Auto discovery of all NetworkHD endpoints
- Powerful web-based UI for intuitive control & management
- Isolated AV and control LAN ports for seamless integration into any network
- LED screen for access to system info
- 7 steps wizard for easy configuration
- Compact chassis for installation into NHD-000-RACK4



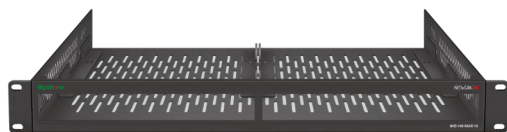
2160p
4:4:4 60

4-Input 4K60 Multiview Processor for NetworkHD NHD-0401-MV

- 4-Inputs supporting 4K60 source content
- Multiview processing up to 4 inputs simultaneously
- Works seamlessly with NetworkHD 400 & 500 series
- Can be used as a standalone multiview processor
- Compatible with NetworkHD Touch

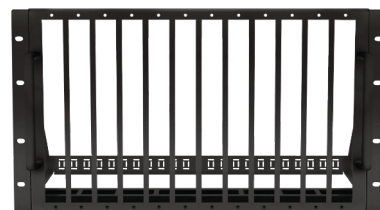
4K HDR HDCP 2.2 TOUCH

RACK MOUNTING SOLUTIONS: 2 OPTIONS FOR MOUNTING NETWORKHD AND PRO AV DEVICES



1U/2 Slot Rack Mount for NetworkHD™ NHD-140-TX NHD-140-RACK-1U

- Designed to support two NHD-140-TX quad encoders while also compatible with the NHD-300-TX and EXP-CON-H2-DD
- 1U height and shallow depth for small footprint installation
- NHD-140-TX encoders can be mounting front or rear facing to suit cable management designs
- Ensures proper thermal dissipation of NetworkHD components



6U/12 Slot Rack Mount for all NetworkHD Encoders NHD-000-RACK4

- Supports all NetworkHD series encoders
- Ensures proper thermal dissipation of NetworkHD components
- All-steel design offers solid, secure, and professional installation
- Removable rear lacing bar provide easy cable management
- Detachable front-facing handles improves rack maneuverability

NETWORKHD TOUCH

FREE, POWERFUL AND SIMPLE CONTROL SOLUTIONS FOR NETWORKHD AV OVER IP

A revolution in touchscreen control, the award-winning free NetworkHD Touch App for iPad puts entire NetworkHD™ 100, 200, 400, and 500 Series AV over IP systems at your fingertips for single screen, video wall and MultiView applications.

An app like no other, NetworkHD Touch is made for iPad with no training required and zero learning curve for users to negotiate. The result is an unrivaled user experience and effortless AV control using a device and gestures users already know, making it ideal for applications as varied as hospitality, retail, exhibition, residential and more.

- MATRIX SWITCHING, VIDEO WALLS & MULTIVIEW**
- BEST AV CONTROL SOLUTION... PERIOD**
- MULTI-ZONE DEMONSTRATION MODE**
- 3RD-PARTY CONTROL INTEGRATION**



COMPANION

SIMPLE CONTROL APPLICATION FOR CONNECTED SOURCES

Companion Control provides additional capability to a NetworkHD system by working seamlessly with NetworkHD hardware and the NetworkHD Touch app. Companion adds the ability to control source devices by leveraging already existing hardware and the NetworkHD API.

The app offers an incredibly quick and intuitive experience driven by a wizard-guided setup. Preloaded control commands for the industry's most common source devices such as DirecTV, SKY, Apple TV, Roku and more are available with a modern user interface that is built automatically.





UNIFIED COMMUNICATIONS

The benefits of video conferencing are clear and it's now more accessible than ever before. However, with the emergence of so many new digital collaboration tools, covering both software & hardware, working out what systems will best suit your company in order to unify all of your communications can be a daunting task, even for the most experienced AV/IT professional. WyreStorm provides a solution for today's demanding meeting spaces, whether that's a small huddle space, large corporate boardroom or classroom.

APOLLO

The Apollo series are designed for anything from small huddle spaces to large conference rooms. Built with ease of use in mind, for successful meetings.

This all-in-one conference solution makes it possible to collaborate effortlessly with team members and have that successful conference call experience.

FOCUS

The Focus range of webcams are designed with a premium wide-angle lens, advanced CMOS sensors, and wide dynamic range (WDR) technology.

Depending on the model, Focus webcams can seamlessly stream 1080p or 4K distortion-less images to your computer for crystal clear video calls.

HALO

The outstanding audio quality of the Halo range of speakerphones can ensure everyone is heard during conference calls, making your meeting more efficient.

Coming in three different models, all include 4 built-in mics arranged in a 360° array, allowing for a clear and natural omni-directionally voice pick-up pattern within 16ft or 5m.



Apollo Series Conference Speakerphone & Switcher

APO-210-UC

- 360° omni-directional microphone array with echo cancellation and a 10-watt speaker
- HDMI and USB-C local inputs support up to 4K30 4:4:4 video passthrough
- Wireless casting via Apple Airplay or Miracast for Android/Windows
- Dual-view allows for two laptops or mobile devices to share content simultaneously
- Features a USB 3.0 peripheral port for connecting webcams or other meeting accessories
- Compatible with all major conference platforms including Microsoft Teams, Zoom, Skype, BlueJeans, Cisco WebEx and more!
- Features the addition of an HDBaseT output



Apollo Series Conference Video Bar & Switcher

APO-VX20-UC

- 180° MEMS microphone array with echo cancellation with powerful stereo speakers
- 4K camera with 120° FOV, 5x digital zoom and smart AI backlighting
- Enhanced camera AI capable of auto-framing and presenter tracking
- HDMI and USB-C local inputs support up to 4K30 4:4:4 video passthrough
- Wireless casting via Apple Airplay or Miracast for Android/Windows
- Includes both a tabletop stand and wall mount for flexible placement
- Compatible with all major conference platforms including Microsoft Teams, Zoom, Skype, BlueJeans, Cisco WebEx and more!



Halo Series All In One Video Bar

HALO-VX10 v2

- 120° Wide-Angle 4K Camera Captures Crystal Clear Video
- Wide Dynamic Range with AI Enhanced Lighting
- Supports up to 90 FPS High Framerate Video Capture
- 4-Microphone Array with Echo Cancellation & Auto Gain Control
- Supports up to 3 HALO-COM-MIC extension microphones
- 3.5mm analog audio output for connecting external speakers



4K UHD Ultra-Wide angle ePTZ Webcam with Integrated Mic

FOCUS 200 PRO

- Supports Wide Dynamic Range (WDR) for clear image in any light
- Gesture Control supported
- 106° Wide-angle lens that captures a wide field of view
- AI backlight compensation & low light compensation
- AI noise-cancelling mics, 8x digital zoom, ePTZ
- Supports 4K/30fps, 1080p/60fps & 720p/90fps





Add-On Microphone for Halo Video Bar

HALO-COM-MIC

- Can be cascaded up to 3 times for expanded mic pick-up range
- Supports AEC, AGC & noise suppression
- Beam-forming microphone array
- Small & compact design with a minimal footprint
- Convenient mute toggle button for microphone



USB 3.2 Active Optical Extension Cable

CAB-UAOC-15

- Extends USB signals up to 15 meters (50ft)
- USB Type A male to Type A female connectors allows compatibility with USB devices
- Supports USB 3.2 Gen 2 spec allowing up to 10Gbps bandwidth
- Maximum power carry of 5v 900mA to remotely power USB devices.
- Compatible with USB 3.0 hubs to allow connection of multiple USB devices
- Plenum, FT6 & CPR safety ratings for installation in air plenums, ducts, walls, conduits, ceilings, or anywhere else a fire rating is required



Add-On Microphone for Apollo Video Bar

APO-COM-MIC

- 360° omni-directional microphone array with echo cancellation
- Can be cascaded up to three times for maximum room coverage
- 2-way communication with mute toggle and LED feedback



USB-C Casting Dongle for Apollo & Presentation Switchers

APO-DG1

- Provides wireless screen sharing functionality for USB-C equipped laptop
- Up to Full HD 1080p video streaming
- Easy one-press content sharing
- Compatible with Apollo series, SW-540-TX-W & SW-220-TX-W switchers
- Plug and play, no software or drivers needed



USB to Ethernet Extender for Apollo Add-On Mic

APO-MIC-EXT

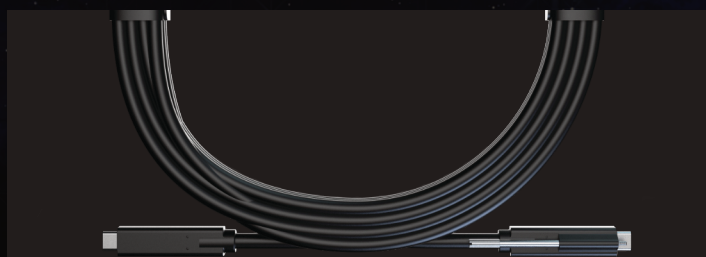
- Supports up to 60m(197ft) extension using Cat6 or higher cabling
- Powers via USB; does not require external power supply
- Small footprint makes installing behind a display or under a table a breeze



4-Port USB 3.0 Superspeed Hub

USB-HUB4

- 4 x USB 3.0 device ports for connecting peripheral devices
- High-speed data transfer rates up to USB Superspeed 5Gbps
- Professional design allows for mounting under a table or behind a display
- Fully backwards compatible with USB 2.0 devices
- USB 3.0 sharing 4.5A current, single port max. 1.5A; Min. 900mA for each port
- Simple plug and play design with no drivers required



USB-C to C 10Gbps Active Optical Cable

CAB-USBC-15

- Extends USB signals up to 15m (50ft)
- USB 3.2 Gen 2 spec support up to 10Gbps data transfers
- Backwards compatible with USB 2.0
- Supports 60W power to charge connected USB-C devices



OUR INNOVATION. YOUR COLLABORATION.

The IDB series in-desk connectivity products are simple to use solutions for corporate or education applications. Easy to install into a desk or table, they offer the essential connectivity for your meeting, lecture, or classroom. Featuring flip-top lids to protect and help blend into the desk when not in use. The NA models include a North American Type B mains outlet and the MS models include a multi-standard outlet for the UK and other European countries.



Flip Up In-Desk Connectivity with Power (North America and Multi-Standard Mains)

IDB-400-NA | IDB-400-MS

- Multiple connection options including: 1x Mains, USB Charging, 2 x HDMI, USB-C and RJ-45 passthrough
- HDMI and USB-C connections support up to 4K UHD video passthrough
- 2x USB Type A charging ports for connecting mobile devices such as smartphones or tablets
- Spring-loaded flip up design allows you to simply push on the lid to expose the ports
- Optional Weiland to UK & Schuko 2 meter cables available for 'MS' models (IDB-PWR-UK & IDB-PWR-SCH)



Compact In-Desk Connectivity with Power (North America and Multi-Standard Mains)

IDB-200-NA | IDB-200-MS

- Multiple connection options including: 1x Mains, USB Charging, HDMI & USB-C Passthrough
- HDMI and USB-C support up to 4K UHD video passthrough
- 2x USB Type A charging ports for connecting mobile devices such as smartphones or tablets
- Compact design allows for discrete installation into any desk or table
- Flip-top lid for protection of ports and discrete appearance when not in use
- Optional Weiland to UK & Schuko 2-meter cables available for 'MS' models (IDB-PWR-UK & IDB-PWR-SCH)



Under-desk Cable Management 'Spine' with Adjustable Height

IDB-SPINE

- Neatly organizes wires under the desk to keep installation tidy
- Adjustable height supporting a maximum 36" desk/table
- Pair with the IDB range of in-desk connectivity solutions



SYNERGY PRESENTATION SOLUTIONS: DYNAMIC SWITCHING, OUT OF SIGHT & OUT OF MIND

At WyreStorm, we believe that presenting content should be a passive experience; the equipment that you're connecting to should require as little interaction as possible so you can get on with business. We've designed our range of static and extending presentation switches to operate with automatic source switching at the heart of their operation. Additionally, some models now include CEC power triggering which can power a connected screen or projector on or off based on source presence.

It doesn't stop there though; most of the products in the presentation switcher range have the ability to trigger connected projector screens, lifts or blinds via their built-in relays, bringing both a degree of autonomy and cost saving to corporate or education installs. With 4K and HDCP2.2 compatibility thrown in for good measure, these powerful switchers will also handle most modern commercially available content, too.



MULTI-INPUT SWITCHING

Bringing features of the H2 and PRO products into powerful meeting space solutions, WyreStorm has released a plethora of presentation switching solutions that feature multiple input formats such as HDMI, VGA, DisplayPort and USB-C. Supporting USB routing, device data can be fed back via the USB host or USB-C ports to a connected source.



USB 2.0 PASS-THROUGH

HDBaseT2.0 affords the addition of USB 2.0 pass-through, offering not only KVM functionality for extension of a keyboard/mouse or touchscreen but also data transfer capabilities. Furthermore, the SW-740-TX allows automatic or manual switching of USB host between either the USB-B or USB-C ports allowing full flexibility of connected USB peripherals.



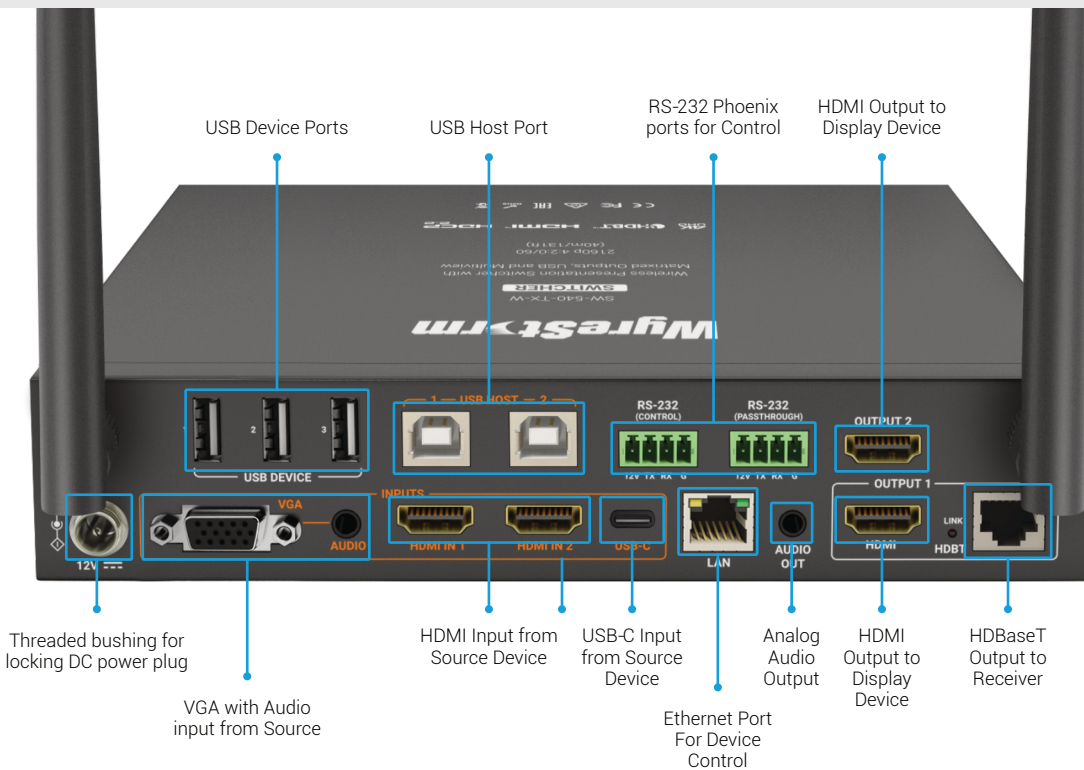
DEVICE CHARGING

The USB-C connection provides up to 65-watt charging capability. Plus, using USB-C Alt-Mode allows the SW-740-TX to simultaneously transmit audio, video, data and power to your PC, Mac, smartphone or tablet through one convenient cable.



PIR SENSOR

Connect an occupancy sensor to automatically trigger room activities such as turning on the display and switching an input all by just walking into a room.



4x2 Conference Presentation Switch

MX-0402-MST

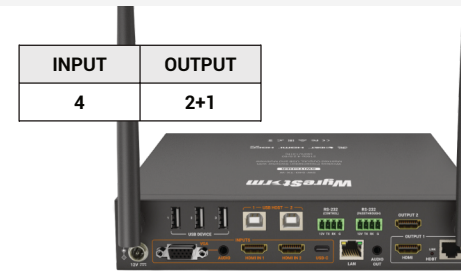
- Dual USB-C and dual HDMI + USB 3.2 inputs
- Cable lock connections
- Auto switching
- 4x USB 3.2 for peripheral devices
- Balanced audio de-embedding
- GPIO ports for connecting "Show Me" buttons
- USB to Ethernet bridge
- USB-C input supports 4K video, USB 3.2 data, ethernet and 60W charging
- Dual independent RJ45 ports for ethernet switching or VLAN settings



4x2 4K Switcher with Wireless Casting & MST Hub

SW-640L-TX-W

- 2 HDMI and 2 USB-C inputs supporting alt-mode functions
- USB 3.0 host for HDMI and USB-C with additional 65W charging
- MST support allowing extended display abilities over both outputs
- Supports access and control of USB peripherals over APO-DG2
- 4K Wireless screensharing via Apple Airplay, Miracast, ChromeCast and APO-DG2
- 2 Ethernet interfaces for additional network security
- Mute analog input and Relay output



4x2 4K HDBaseT Switcher with Wireless Casting

SW-540-TX-W

- 4 inputs: 2 HDMI, 1 VGA and 1 USB-C supporting alt-mode functionality
- Supports up to 4K30 4:4:4/4:2:2 video passthrough
- Wireless screensharing via Apple Airplay or Miracast for Android/Windows
- Quad-view processing supports up to four separate devices to share content simultaneously
- Dual output via HDMI and HDBaseT with Mirrored HDMI output
- Built-in USB hub for connection of USB peripheral devices



35m 4K HDBaseT Receiver with USB

RX-500

- HDBaseT receiver supports up to 4K60 4:2:0 content
- 4 x USB 2.0 ports for connecting peripheral USB devices
- Analog audio de-embed for connecting an external amplifier or DSP



INPUT	OUTPUT
4+2	1+1



4-Input 4K HDBaseT Switcher with USB

SW-510-TX

- 4 inputs: HDMI, VGA, DisplayPort, and USB-C supporting alt-mode functionality
- Supports up to 4K60 4:2:0 video passthrough
- Automatic or manual switching between HDMI, VGA, DisplayPort, and USB-C inputs
- Built-in USB hub for connection of USB peripheral devices
- Automatic or manual CEC triggering for compatible connected screens or projectors



INPUT	OUTPUT
4+2	1+1

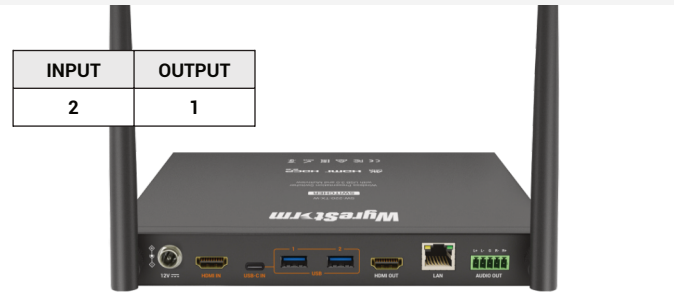


4K HDBaseT Receiver with USB & Local Inputs

SW-515-RX

- HDBaseT receiver supports up to 4K60 4:2:0 content
- 2x condition-based relays for controlling compatible screens or lifts
- Built-in USB hub for connection of USB peripheral devices
- 2x switchable local HDMI inputs for digital signage or room PCs
- Analog audio de-embed for connecting to an external amplifier or DSP

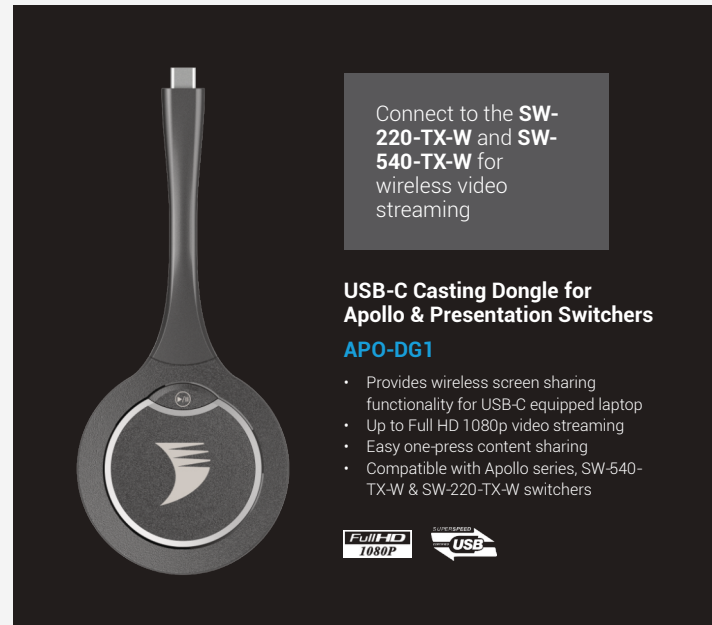




2-Input 4K UHD Presentation Switcher with Multiview, Wireless Casting & USB 3.0

SW-220-TX-W

- Dual inputs via HDMI & USB-C support up to 4K UHD source content
- Wirelessly screenshare from your device using AirPlay or Miracast
- Multiview processing capable of displaying 2 simultaneous video sources
- USB 3.0 device ports for connection of high speed USB peripherals
- Compact size for easy mounting under a desk or table



70m 4K HDBaseT Transmitter

TX-70-4K

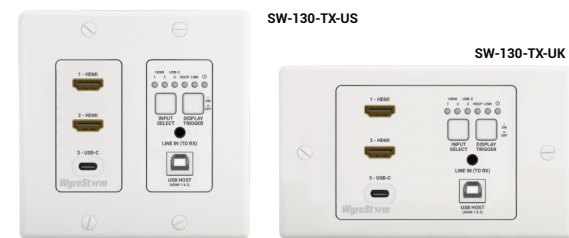
- Supports up to 4K60 4:2:0 content with compatible receiver
- Low-profile 18mm chassis
- Supports video, audio, bidirectional IR/RS-232, PoH and Ethernet



4K HDBaseT™ Receiver (4K: 70m/230ft | 1080p: 100m/328ft)

RX-70-4K

- Supports up to 4K60 4:2:0 content with compatible transmitter
- Low-profile 18mm chassis
- Supports video, audio, bidirectional IR/RS-232, PoH and Ethernet



3-Input In-wall HDBaseT Transmitter

SW-130-TX-US | SW-130-TX-UK

- 2 HDMI and USB-C input with alt-mode functionality
- USB host for HDMI inputs for far-end device control
- Local CEC display trigger and source select
- Separate audio input to RX
- USB-C device charging (up to 5v 2A)
- Powered by PoH from RX-500 or Local PSU



35m 4K HDBaseT Receiver with USB

RX-500

- HDBaseT receiver supports up to 4K60 4:2:0 content
- 4 x USB 2.0 ports for connecting peripheral USB devices
- Analog audio de-embed for connecting an external amplifier or DSP



Synergy™ 10.1" All-In-One Touchpad Controller

SYN-TOUCH10

- Powerful and intuitive controller, perfect for modern education and corporate installs
- Import prebuilt WyreStorm templates for Synergy and Apollo series products
- Fully customizable UI with the ability to add a range of layouts and control buttons
- PoE+ means only one cable is needed for power and data
- Standard VESA75 tabletop stand and US, UK and EU compatible wall mount included



Synergy™ 10-button Keypad Controller

SYN-KEY10

- Pair with WyreStorm or 3rd party devices over RS-232 or multiple devices over IP
- Power and deliver commands over single-standard category cable
- Easy-to-use Web UI allows command editing and testing, group creation, and more.
- Part of WyreStorm's Synergy series predesigned templates for your convenience.



HDMI 1-Gang In-wall HDBaseT Transmitter

TX-35-IW

- Supports 4K60 4:2:0 content with compatible RX-35-POH receiver
- PoH enables unit to be powered remotely from a compatible HDBaseT receiver
- Additional 12V DC phoenix connection for local power when used with a non-PoH receiver (12v 1a PSU sold separately)
- Built-in front panel IR receiver window and rear facing 3-pin phoenix connection for easy TV/projector control
- Bidirectional RS-232 passthrough via rear facing 3-pin phoenix connection



35m 4K HDBaseT Receiver

RX-35-POH

- Supports up to 4K60 4:2:0 content with compatible transmitter
- RS-232 and IR passthrough for control of peripheral equipment



2.8" Serial Control Color Touchscreen

TS-280-US | TS-280-EU

- Compact 2.8" backlit color touchscreen available as EU or 2-Gang US models
- Auto power off and wake-on-touch
- Compatible with all WyreStorm presentation switchers/matrices
- Powered directly by compatible switchers or external PSU via power injection box
- User preference configurable
- Easy update via MicroSD



Adapter Ring with USB-C, DisplayPort & Mini DisplayPort to HDMI with Cable Lock

WYRERING

- 3 HDMI converters included: USB-C, DisplayPort & Mini DisplayPort
- Ideal for small meeting spaces where presentation switchers are not needed
- All converters are capable of transmitting 4K60 video content
- Secure cable lock ensures connections to HDMI cables are there to stay
- Metal reinforced ring provides durable and secure connection to converters
- Metal information tag attached provides model number and information
- Includes crosshead screwdriver for attaching cable lock to HDMI cable

PRESENTATION BUNDLE KITS

Our presentation bundle kits have been specifically designed to make your installs easier. By providing you with simple solutions, you can take these and build simple, easy to use installs but most importantly, spend less time putting them together.

In-Wall Presentation Kit with Control

[SYN-KIT-130-US](#) | [SYN-KIT-130-EU](#)



2.8" Serial Control Color Touchscreen

[TS-280-US](#) | [TS-280-EU](#)

- Compact 2.8" backlit color touchscreen available as EU or 2-Gang US models
- Auto power off and wake-on-touch
- Compatible with all WyreStorm presentation switchers/matrices
- Powered directly by compatible switchers or external PSU via power injection box
- User preference configurable
- Easy update via MicroSD

3-Input In-wall HDBaseT Transmitter

[SW-130-TX-US](#) | [SW-130-TX-UK](#)

- 2 HDMI and USB-C input with alt-mode functionality
- USB host for HDMI inputs for far-end device control
- Local CEC display trigger and source select
- Separate audio input to RX
- USB-C device charging (up to 5v 2A)
- Powered by PoH from RX-500 or local PSU

35m 4K HDBaseT Receiver with USB

[RX-500](#)

- HDBaseT receiver supports up to 4K60 4:2:0 content
- 4 x USB 2.0 ports for connecting peripheral USB devices
- Analog audio de-embed for connecting an external amplifier or DSP

In-Wall Presentation Kit with Control

[SYN-KIT-510-US](#) | [SYN-KIT-510-EU](#)



2.8" Serial Control Color Touchscreen

[TS-280-US](#) | [TS-280-EU](#)

- Compact 2.8" backlit color touchscreen available as EU or 2-Gang US models
- Auto power off and wake-on-touch
- Compatible with all WyreStorm presentation switchers/matrices
- Powered directly by compatible switchers or external PSU via power injection box
- User preference configurable
- Easy update via MicroSD

4-Input 4K HDBaseT Switcher with USB

[SW-510-TX](#)

- 4 inputs: HDMI, VGA, DisplayPort, and USB-C supporting alt-mode functionality
- Supports up to 4K60 4:2:0 video passthrough
- Automatic or manual switching between HDMI, VGA, DisplayPort, and USB-C inputs
- Built-in USB hub for connection of USB peripheral devices
- Automatic or manual CEC triggering for compatible connected screens or projectors

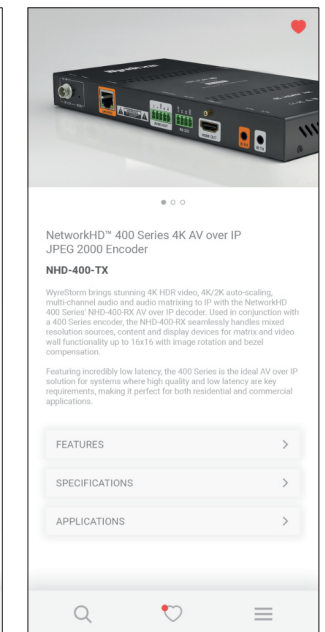
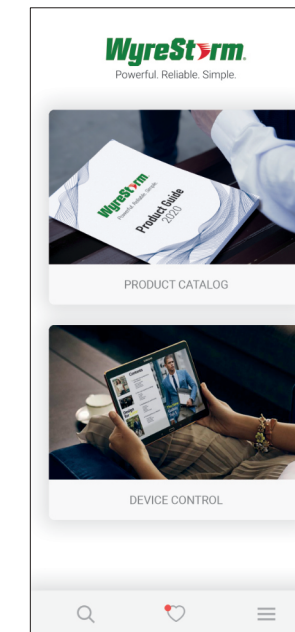
4K HDBaseT Receiver with USB & Local Inputs

[SW-515-RX](#)

- HDBaseT receiver supports up to 4K60 4:2:0 content
- 2x condition-based relays for controlling compatible screens or lifts
- Built-in USB hub for connection of USB peripheral devices
- 2x switchable local HDMI inputs for digital signage or room PCs
- Analog audio de-embed for connecting to an external amplifier or DSP



CATALOG & CONTROL ON THE GO!

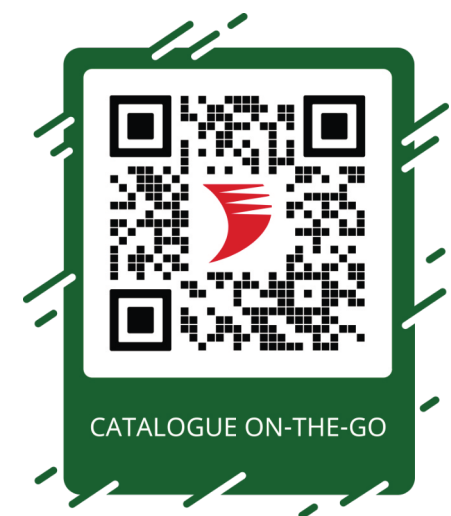


Providing you frontline access to all the information you need!

Save time and effort searching for WyreStorm products, technical information, and model features - all available in the Smart App Catalog.

Simple Matrix Control in the palm of your hand!

Giving you basic control of WyreStorm Matrix Switchers from your own Smart Phone through the simple control feature.

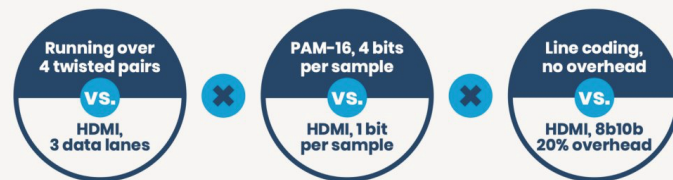
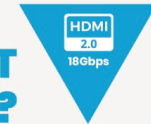




HDBASET 3: The Only Fully Uncompressed Solution on the Market

HDBaseT 3.0 enables the convergence and long-distance distribution of ultra-high speed uncompressed HDMI 2.0 audio & video, 1Gb Ethernet, USB 2.0, controls, and power, with zero latency – all over a single Category cable.

HOW DOES IT WORK?



2160p
4:4:4 60



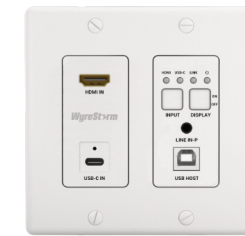
Synergy™ 2-Input 4K60Hz HDBaseT™ 3.0 Switching In-Wall Transmitter with USB-C and HDMI

SW-120-TX3-UK

- High-speed USB 2.0 pass-through of up to 300Mbps
- HDBaseT 3.0 in-wall transmitter supporting uncompressed
- 18Gbps bandwidth up to 100m/330ft
- HDCP 2.3 content compatible
- Supports USB-C source charging of up to 60W (with 20V 6A PSU)
- Unit switches automatically upon source detection or via manually over API or button press
- Compatible with RX3-100, MX-1007-HYB



2160p
4:4:4 60



Synergy™ 2-Input 4K60Hz HDBaseT™ 3.0 Switching In-Wall Transmitter with USB-C and HDMI

SW-120-TX3-US

- High-speed USB 2.0 pass-through of up to 300Mbps
- HDBaseT 3.0 in-wall transmitter supporting uncompressed
- 18Gbps bandwidth up to 100m/330ft
- HDCP 2.3 content compatible
- Supports USB-C source charging of up to 60W (with 20V 6A PSU)
- Unit switches automatically upon source detection or via manually over API or button press
- Compatible with RX3-100, MX-1007-HYB



2160p
4:4:4 60



Synergy™ 2-Input 4K60Hz HDBaseT™ 3.0 Switching Transmitter with USB-C and HDMI USB 2.0

SW-120-TX3

- HDBaseT 3.0 transmitter supporting uncompressed 18Gbps bandwidth up to 100m/330ft
- Supports USB-C source charging of up to 60W (with 20V 6A PSU)
- Unit switches automatically upon source detection or via manually over API or button press
- Compatible with RX3-100, MX-1007-HYB



2160p
4:4:4 60



4K60Hz HDBaseT 3.0 Receiver PoH USB 2.0 | Audio De-Embed RS-232 Passthrough

RX3-100

- HDCP 2.3 content compatible
- High-Speed USB 2.0 pass-through of up to 300Mbps
- HDBaseT 3.0 inwall transmitter supporting uncompressed
- 18Gbps bandwidth up to 100m/330ft
- Compatible with SW-120-TX3, SW-120-TX3-UK/US, MX-1007-HYB



WHAT IS THE HDBASET ALLIANCE?

Since its introduction in 2010, HDBaseT has revolutionized the video distribution sector. It brings a rich feature set, increased reach, and better performance than existing solutions. The cornerstone of the technology is 5Play, the converged and simultaneous delivery of uncompressed ultra-high-definition digital video and audio, Ethernet, USB, control signals and power over a single cable.

Today, HDBaseT is optimized for different markets, addressing the specific needs of such sectors as audiovisual, automotive, industrial PCs, consumer electronics and more. The common denominator in all these sectors is the need to distribute high-quality signals over the best, lowest-cost infrastructure, for the longest distance possible. HDBaseT delivers quality of experience, eliminating cable clutter and without compromising performance and high quality.

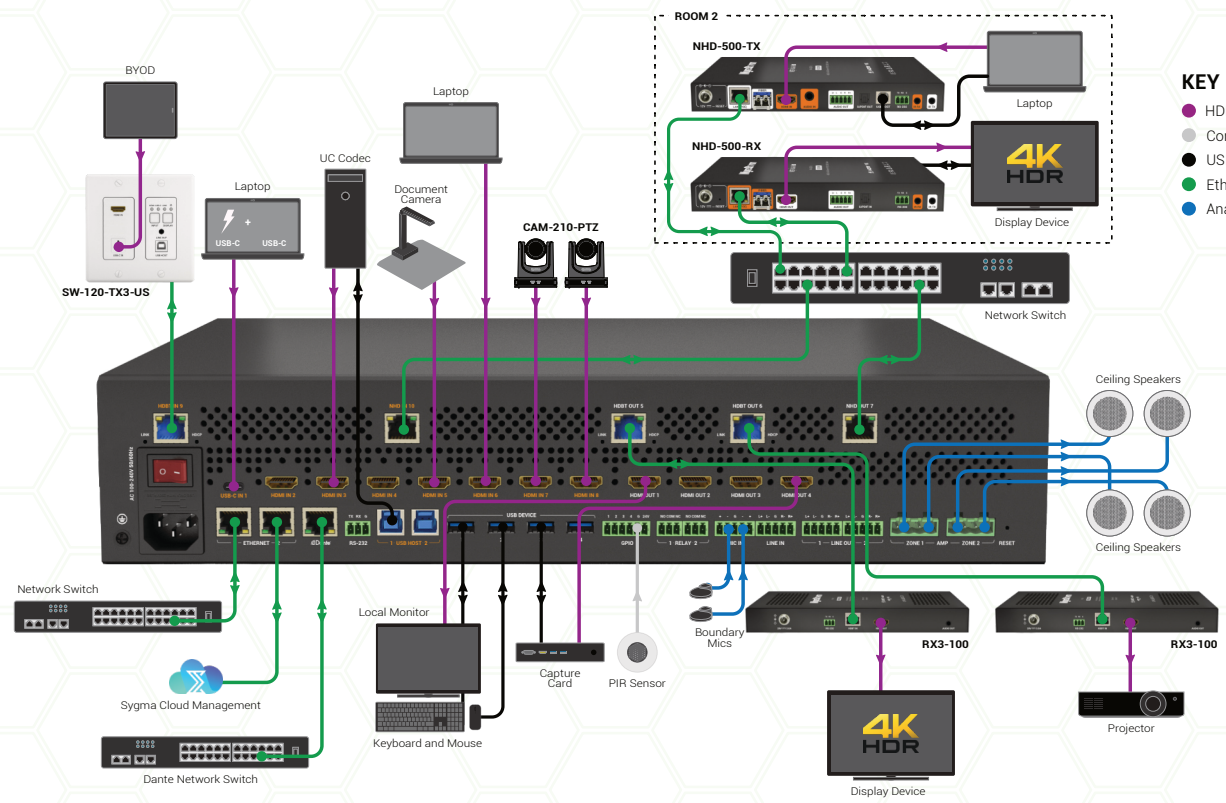


INTRODUCING EDUCATION MATRICES

AV FOR A SMARTER FUTURE IN HIGHER EDUCATION

- Versatile Input Compatibility**
 A wide range of inputs, including USB-C; HDMI; HDBaseT; AV over IP; Audio and Microphone, makes it compatible with devices used in Education.
- Dynamic Content Switching**
 Lecturers can easily switch between different inputs, without the need for a complex setup, allowing for dynamic and engaging presentations.
- Reliable and High-Quality Outputs**
 4K resolution ensures sharp, clear video for presentations. It's also compatible with various audio formats, creating an fully immersive experience.

- Enhanced Collaboration**
 HDMI and HDBaseT outputs facilitate collaboration, enabling content sharing on different screens simultaneously, fostering student engagement.
- Scalable Audio and Video Distribution**
 The switcher can distribute both audio and video signals to multiple destinations, ensuring every corner of the room receives high quality content.
- Seamless Presentations**
 An integrated amplifier enhances audio quality, creating a more immersive learning experience, while audio and microphone inputs cater to the needs of presenters and educators, making sure their voices are clearly heard.



- 8x4 Multi-Input Matrix
MXV-0804-EDC**
- Multi-format video connections include USB-C and HDMI
 - Fast up to 1 second switching across all video inputs and outputs
 - 480p to 2160p scaling built-in all video outputs
 - USB-C input supports 4K60 video, USB3.0/USB2.0, 1G network, and PD3.0 USB host charging up to 60watts
 - Supports USB host switching and device extension
 - Switching USB hosts include 1x USB-C port, 2x local USB3.0 USB-B ports input related USB connection.
 - USB devices include 4x local USB3.0 USB-A ports related USB connections
 - Supports 2x MIC inputs, 1x LINE input, Dante 4x4 optional and 2x 5-pin balanced audio outputs
 - Supports audio DSP, include gain control, mixer, ducking, mute etc
 - 4-channel 4/8ohm speaker outputs
 - GPIO and Relay support for automation of screens, occupancy etc.



- 10x7 Multi-Input Hybrid Matrix
MXV-1007-HYB**
- Multi-format video connections include USB-C, HDMI, HDBaseT and NetworkHD (500 Series)
 - NetworkHD input and output supports spill-over applications
 - Fast up to 1 second switching across all video outputs
 - 480p to 2160p scaling built-in all video outputs
 - USB-C input supports 4K60 video, USB3.0 & USB2.0, 1G network, and PD3.0 USB host charging up to 60watts
 - All HDBaseT outputs support HDBaseT 3.0 specification, which includes uncompressed A/V, RS-232, USB2.0 and
 - PoE+ PSE transmission up to 330ft/100m
 - NetworkHD output supports a 4K60 scaler, and seamless switching of A/V, USB2.0 and RS-232 control signals up to 330ft/100m, or longer via 1G network switch
 - Supports USB host switching and device extension
 - Switching USB hosts include 1x USB-C port, 2x local USB3.0 USB-B ports, 1x NHD input, 1x HDBT input related USB connection.
 - USB devices include 4x local USB3.0 USB-A ports, 1x NHD output, 2x HDBT outputs related USB connections.
 - Supports 2x MIC inputs, 1x LINE input, Dante 4x4 optional and 2x 5-pin balanced audio outputs
 - 4-channel 4/8ohm speaker outputs
 - GPIO and Relay support for automation of screens, occupancy etc.



4K60 HDBASET SWITCHERS: 4 OPTIONS FOR 4K HDR DISTRIBUTION OVER HDBASET

WyreStorm is proud to present a new range of matrix switchers specifically tailored to meet the increased demands of today's source content. Offering 18Gbps HDMI transmission by pairing HDBaseT with WyreStorm's powerful lossless "VLC" compression algorithm, the MXV range uses a light compress/decompress technique to maintain signal integrity, leaving behind competing compression methods such as Color Space Compression which permanently remove color data.

Shared features of the 6 models crucially include the ability to handle both 4K/60 HDR and 8-bit 4:4:4 content to all zones and have assignable audio breakouts for each HDBaseT zone or source; most models also feature mirrored HDMI outputs to feed additional screens. With ease of installation at their heart, the powerful range of MXV matrices ensure just that and offer new innovative features such as the ability to switch any zone "off" using AV Mute and standby mode which can put the unit into a low power state when not in use, cutting power consumption by up to 34%.

2160p
4:4:4 60

SIGNAL INTEGRITY FROM SOURCE TO DISPLAY

Fact: Not all signal compression is the same. The MXV range can transmit 18Gbps HDMI content over conventional HDBaseT. We achieve this using our VLC (Variable Lossless Compression) technology which adds light compression at the point of transmission and re-builds the signal at the receiver without any visual degradation or artefacting.



DE-EMBEDDED AUDIO

With audio functionality to match its video capability, the MXV range has the ability to extract the audio signals from a source device or from an output, following the zone. Having S/PDIF connectivity means having the flexibility to send multi-channel 5.1 audio to local AVR's or downmix to stereo using the EXP-CON-DAC-D.

CEC

CEC AND RS-232 ROUTING

Specific to the version 3 model, the MXV 8x8 gives users many options to power displays on and off. These options include RS-232 routing to discreet zones, as well as using automatic, API and custom generated triggered CEC commands.



MIRRORED HDMI OUTPUTS

In addition to the HDBaseT zone outputs, most models in the MXV range also feature HDMI output ports which mirror HDBaseT zones 1-4. They can be paired with any of WyreStorm's HAOC hybrid optical HDMI cables for transmission up to 50m/164ft or any extender for transmission over HDBaseT to 100m/328ft or even OM3 fiber up to 300m/984ft.

Extensive EDID Management

Via the embedded WebUI, an installer has access to full EDID management offering read, copy, store & import functions and even assign a different EDID to each connected source device.

CEC Triggering

Working automatically on signal presence or triggered via the API, the MXV range can send custom defined power trigger commands to all compatible connected screens or projectors meaning an integrated autonomous control solution.



Powerful Input Connectivity

HDMI Inputs and HDMI outputs support bandwidths of up to 18Gbps with content at RGB/4:4:4 or chroma-sampled up to 4:2:2 12-bit. Inputs are compatible with DVI-I and DP++ v1.3 signals from compatible source devices.

A/V Mute Function Cuts Output Feeds

A useful feature across many applications, the A/V mute function is another switching option meaning a source doesn't have to be selected. It enables the matrix to stop sending the signal to an output with a simple API command.



INPUT	OUTPUT
8	8+2

2160p
4:4:4 60



4K60 8x8 'Lite' Matrix

MXV-0808-H2L

- HDBaseT Transmission of 4K/60 4:4:4 up to 35m/115ft to 8 zones
- Supports 60Hz HDR-10 & HLG content and Dolby Vision at 30Hz over HDBaseT
- 2 mirrored HDMI outputs offering 18Gbps throughput
- API triggered standby mode puts unit into low power state during downtime
- A/V mute function cuts signal to any output on demand
- Automatic or API triggered CEC power triggers for all compatible connected screens or projectors

HDBT PoH Dolby Vision CEC

INPUT	OUTPUT
8	8+4

2160p
4:4:4 60



4K60 8x8 HDBaseT Matrix

MXV-0808-H2A

- Supports up to 4K60 4:4:4 content up to 8+4 zones
- S/PDIF Toslink Audio matrix outputs with mute
- A/V mute function cuts signal to any output on demand
- Automatic or API triggered and custom CEC powers compatible connected displays
- Routable RS232 routing to discreet Zones

HDBT PoH Dolby Vision CEC

2160p
4:4:4 60



35m 4K60 HDBaseT™ Receiver for MXV

RXV-35-4K

- HDBaseT receiver supports up to 4K60 4:4:4 content
- Supports transmission of Video, multichannel audio and bidirectional control
- Supports HDMI2.0 video standard up to 18Gbps
- Powered remotely via PoH from MXV matrix

HDBT PoH Dolby Vision

2160p
4:4:4 60



Scaling 35m 4K60 HDBaseT Receiver for MXV

RXV-35-SCL

- HDBaseT receiver supports up to 4K60 4:4:4 content
- Scales 4K source content to 1080p for non-UHD displays
- Supports transmission of Video, multichannel audio and bidirectional control
- Stereo and S/PDIF de-embedded audio

HDBT PoH Dolby Vision CEC



INPUT	OUTPUT
8	8+4

2160p
4:4:4 60



70m 4K60 8x8 HDBaseT Matrix

MXV-0808-H2A-70

- 70 meter (230ft) version supporting up to 4K60 4:4:4 content up to 8+4 zones
- S/PDIF Toslink Audio matrix outputs with mute
- A/V mute function cuts signal to any output on demand
- Automatic or API triggered and custom CEC powers compatible connected displays
- Routable RS232 routing to discreet Zones

CHDBT™ PoH Dolby Vision CEC

2160p
4:4:4 60



70m 4K60 HDBaseT™ Receiver for MXV

RXV-70-4K-G2

- HDBaseT receiver supports up to 4K60 4:4:4 content
- Supports transmission of Video, multichannel audio and bidirectional control
- Supports HDMI2.0 video standard up to 18Gbps
- Powered remotely via PoH from MXV matrix

CHDBT™ PoH Dolby Vision



WyreStorm

WyreStorm Product Line Receiver Compatibility Chart

Make Sure You Get the Full Package.

A little confused about what Matrix Switcher or Presentation product pairs with what Receiver? WyreStorm is here to help! We have put together an in-depth, easy to understand compatibility chart that helps you to create the perfect AV solution for any installation.

See all of the possible Receiver and HDBaseT Matrix Switcher/Presentation product combinations available.

Visit wyrestorm.com to download.



CASE STUDIES

These case studies are great examples of how we help our customers get the best out of their AV systems, from small residential homes to large scale commercial applications.

VISIT WYRESTORM.COM



4K60 HDMI SWITCHERS: PERFECT HDMI MATRIX SOLUTIONS FOR NEXT-GEN A/V EXPERIENCES

Compact and fully-featured, the MX-H2A matrix supports 18Gbps throughput to the full video capability of HDMI 2.0; it handles distribution of 4:4:4/60 and HDR, supporting the latest broadcast standards and next generation source content. Further features include assignable audio de-embed ports allowing audio signals up to 5.1 to be extracted from the source or from a zone output.

Always looking for important differentiators, WyreStorm has added additional useful functions such as A/V mute, to stop a signal being sent to a zone and given an autonomous edge by adding CEC power triggering for compatible connected screens. With 18Gbps transmission and native HDMI communication in mind, the MX-H2A range are the perfect match for WyreStorm's range of hybrid optical HDMI cables.

2160p
4:4:4 60

HDMI 2.0 MAXED OUT!

Sporting an 18Gbps HDMI backplane, the MX-H2A range can support all UHD video signals up to and including 2160p 4:4:4/60, and high frame-rate HDR 12bit 4:2:2 up to 60Hz, along with multichannel audio up to DTS:X and Dolby Atmos.



DE-EMBEDDED AUDIO

With audio functionality to match its video capability, the MX-H2A range has the ability to extract audio signals either from source devices or at the HDMI output, following the zone. Having S/PDIF and analog connectivity means having the flexibility to use multi-channel 5.1 or stereo audio signals.

CEC

CEC TRIGGERING

Working automatically on source signal presence or triggered via the API, the MX-H2A range can send custom defined power commands to all connected screens or projectors compatible with CEC meaning an integrated autonomous control solution.



A/V MUTE FUNCTION

Certain applications in the residential, education and commercial markets don't always require a source to be routed through to the output. The MX-H2A range makes it possible to "mute" the video output as well as the audio, meaning that the HDMI signals to the zones can be independently switched off via the API.

A/V Mute Function Cuts Output Feeds

A useful feature across many applications, the A/V mute function is another switching option meaning a source doesn't have to be selected. It enables the matrix to stop sending the signal to an output with a simple API command.

Extensive EDID Management

Via the embedded WebUI, an installer has access to full EDID management offering read, copy, store & import functions and even assign a different EDID to each connected source device.

Powerful Input Connectivity

HDMI Inputs and HDMI outputs support bandwidths of up to 18Gbps with 4K 60Hz content including HDR standards such as HDR10, HDR10+, Dolby Vision and HLG. Inputs are compatible with DVI-I and DP++ v1.3 signals from compatible source devices.

Audio De-embed

Featuring balanced analog and a digital S/PDIF, easily de-embed audio from either the HDMI inputs or ARC to a secondary audio distribution system without the need for external adapters or converters.



INPUT	OUTPUT
8	8

2160p
4:4:4 60



4K60 8x8 HDMI Matrix

MXV-0808-H2A-MK2

- Supports up to 4K60 4:4:4 pure HDMI content up to 8 zones
- Each output enabled with automatic 4K to 1080p downscaling
- 8x Balanced analog and digital S/PDIF audio de-embed from input or ARC
- Custom defined CEC power triggering of displays through HDMI outputs via API
- A/V mute function cuts signal to any output on demand

■ Dolby Vision ■ Dolby Atmos ■ ARC ■ CEC

INPUT	OUTPUT
4	4

2160p
4:4:4 60

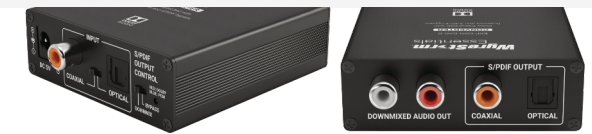


4K HDR 4K60 4x4 HDMI Matrix

MX-0404-HDMI

- Supports up to 4K60 4:4:4 pure HDMI content up to 4 zones
- Each output enabled with automatic 4K to 1080p downscaling
- Equipped with 4x S/PDIF audio de-embed from each output
- IP, RS232 control gives access to extensive library of commands

■ Dolby Vision ■ Dolby Atmos ■ CEC



Digital Audio DAC with Downmix and S/PDIF Bypass

EXP-CON-DAC-D

- Converts Dolby Digital 5.1 to stereo
- Switchable Toslink or Coaxial input
- Output via stereo RCA or S/PDIF
- S/PDIF output switchable between pass-through and downmix

■ Dolby Audio

PAIR WITH MATRIX FOR COMPLETE AUDIO SOLUTION



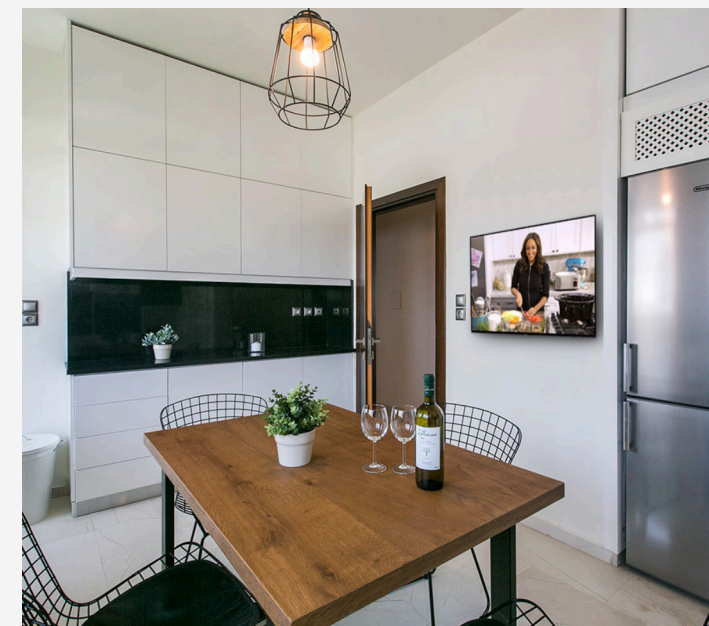
NEXT GENERATION CONTENT NEEDS NEXT GENERATION CONTENT DELIVERY

Experience a next generation HDMI cable specifically designed to be future-proof, supporting 4K and 5K HDR content. It offers a unique feature set in delivering uncompressed HDMI content up to 24Gbps and compatibility with emerging HDMI technologies such as ALLM (Auto Low Latency Mode) & VRR (Variable Refresh Rate) using the latest in optical transmission technology.

Supporting 4K/60 4:4:4 10-bit HDR with HDCP 2.2 for compatibility with the latest 4K UHD content, WyreStorm HAOC's also handle all multichannel audio formats and keep inter-device communication simple with support for both ARC and CEC.

Perfect for point to point use or as part of a WyreStorm 4K UHD matrix switcher system where mirrored HDMI outputs can be used to their full potential, these cables are an ideal solution for any environment where copper transmission may be susceptible to electromagnetic or radio frequency interference.

2160p
4:4:4 60 4K HDR HDMI ARC HDCP 2.3



MATRIX KITS: NEXT GENERATION A/V BUNDLED IN ONE KIT

WyreStorm's kit series is specifically tailored to meet the increased demands of 4K content & HDR, all in one box! Time is money and WyreStorm knows this as each kit is bundled with 4 slim form factor receivers, saving an extra step of pairing the matrix with its appropriate receiver. Each receiver included is PoH ready, eliminating the hassle of fitting an extra power supply at the display end, further saving time and aggravation.

Each kit lets you do even more with your audio with independent audio switching, allowing audio from sources or HDBaseT™ outputs to be de-embedded via S/PDIF and mirrored analog stereo RCA's. Furthermore, an additional mirrored output, coupled with one of WyreStorm's HAOC's, can extend the A/V signal to an AVR or an additional display.



INPUT	OUTPUT
4	4



4K 4x4 HDBaseT Matrix with Receivers

MX-0404-KIT

- Supports up to 4K60 4:2:0 content up to 3x HDBaseT and 1x HDMI output
- All-in-one kit including 3 receivers and all accessories necessary to complete installation
- S/PDIF audio output for de-embedded HDMI audio per output
- AV mute function cuts signal to any output on demand



INPUT	OUTPUT
8	8



4K 8x8 HDBaseT Matrix with Receivers

MX-0808-KIT

- Supports up to 4K60 4:2:0 content up to 8+4 zones
- All-in-one kit including 8 receivers and all accessories necessary to complete installation
- 4x Balanced audio outputs (5-8) for de-embedding multichannel audio



HDCP 2.2 HDCP 2.2 COMPATIBLE

The industry's latest encryption standard designed to stop the illegal copying & distribution of 4K UHD content. WyreStorm matrix switchers are fully compliant with HDCP 2.2, enabling you to centralize source devices within an installation.



DE-EMBEDDED AUDIO

A first for a WyreStorm 4x4 matrix, the H2A-KIT has the ability to extract the audio signals from either source devices or from the HDBaseT™ output. Having S/PDIF and analog connectivity means having the flexibility to use multi-channel 5.1 or stereo audio signals.



KIT COMPLETE WITH RECEIVERS

With WyreStorm's matrix kits, there's no need to worry about whether you have everything you need for the job. Each kit comes with all the necessary accessories and receivers needed to get a project up and running all in one box! This also takes away the headache of choosing the correct receiver as each kit includes all 4 receivers.



MIRRORED HDMI OUTPUTS

Certain applications in the residential, education and commercial markets don't always require a source to be routed through to the output. The MX-H2A range makes it possible to "mute" the video output as well as the audio, meaning that the HDMI signals to the zones can be independently switched off via the API.



INPUT	OUTPUT
4	4+1

2160p
4:4:4 60



4K60 4x4 HDBaseT Matrix with Receivers

MXV-0404-H2A-KIT

- Supports up to 4K60 4:4:4 content up to 4+1 zones
- All-in-one kit including 4 receivers and all the accessories necessary to complete installation
- Matrixed audio outputs via S/PDIF and RCA with audio mute
- Single mirrored HDMI output for connection to local AVR or display
- A/V mute function cuts signal to any output on demand



CUSTOMER TESTIMONIALS



LANCE KU - SPORTECH PLC
WyreStorm enabled us to realize our concept perfectly with a powerful, yet cost effective solution that gives our customers exactly the AV experience we envisioned.

DANIEL LEE - HEWSHOTT TECHNOLOGY & ACOUSTIC
The University prides itself on offering best in class across all areas and the AV from WyreStorm is no exception. The outcome is superb and one that all involved should be very proud of.



MICHAL ČERNÝ - AUDIOPRO
We were pleased with the quality, reliability and commitment from WyreStorm and were delighted with the innovative solutions available.

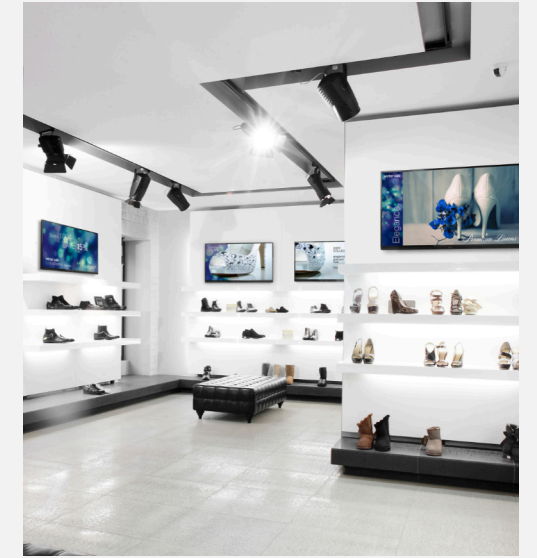
NEED HDMI, HDBASET OR FIBER **MATRIX** SWITCHING? WYRESTORM HAS YOU COVERED.

	HDMI Series	MX-KIT	MXV Series	MXV-70 Series	H2XC with HDMI Card	H2XC with ADZ Card
Audio + Video						
Technology	HDMI	HDBaseT Class B	HDBaseT Class B	HDBaseT Class A	HDBaseT Class A	HDMI
HDCP	2.3	2.2	2.3	2.3	2.2	2.2
1080p Distance	N/A	70m/230ft	70m/230ft	100m/328ft	140m/459ft	15m Copper HDMI*
4K Distance	N/A	35m/115ft	35m/115ft	70m/230ft	70m/230ft	7m Copper HDMI*
Max. Resolution	2160@60 4:4:4	2160@60 4:2:0	2160@60 4:4:4	2160@60 4:4:4	2160@60 4:2:0	2160@60 4:4:4
DV/HDR Support	DV 60Hz	HDR10 30Hz	DV 30Hz	HDR 60Hz/ DV 30Hz	HDR10 30Hz	DV 60Hz
Zone Audio Breakout	✓	✓	✓	✓	✓	✓
Source Audio Breakout	✗	✓	✓	✓	✓	✓
HDMI Mirrored Outputs	NA	✓	✓	✓	✓	✓
ARC (Audio Return Channel)	(8x8 only)	✗	✗	✗	✓	✗
VLC Signal Compression	NA	✗	✓	✓	✗	✗
Communication						
Ethernet to Zone	NA	✗	✗	✗	✓	✗
Setup Via Web UI	✓	✓	✓	✓	✓	✓
System Diagnostics	✗	✗	✗	✗	✓	✓
Control						
IR (Bidirectional)	NA	✓	✓	✓	✓	✗
API Generated RS-232 to Zone	NA	✓	✓	✓	✓	✗
AV Mute for Outputs	✓	✓	✓	✓	✗	✗
CEC Power Triggering	✓	✓	✓	✓	✓	✓
Customized CEC Commands	✓	✗	✓	✓	✗	✗
Power						
Standby Mode	✓	✓	✓	✓	✗	✗
PoH	NA	✓	✓	✓	✓	NA

SPLITTERS: SIMPLE AND EFFECTIVE HDMI DISTRIBUTION

At the more basic end of the HDMI distribution spectrum is the humble splitter, offering reliable & balanced signal management for up to 8 video zones fed from a single source. But "basic end" doesn't have to mean low performance with WyreStorm HDMI splitters offering 18Gbps HDMI performance across all outputs; this means support for video signals up to 4K/60 4:4:4 at 8-bit or 4:2:2 12-bit for residential HDR requirements.

These powerful HDMI splitters can be paired with WyreStorm's range of Active Optical cables for pure uncompressed transmission of 4K UHD up to 50m or even our EXF-300-H2 multimode fiber extender to reach distances up to 300m/984ft.



INPUT	OUTPUT
1	2

2160p
4:4:4 60



4K60 1:2 HDMI Splitter

SP-0102-H2

- Supports up to 4K60 4:4:4 content up to 2 displays
- Easy Plug and play splitter with automatic EDID negotiation from output 1
- Low-profile 18mm chassis with mounting brackets for flexible placement

Dolby Vision Dolby Atmos

INPUT	OUTPUT
1	4

2160p
4:4:4 60



4K60 1:4 HDMI Splitter

SP-0104-H2

- Supports up to 4K60 4:4:4 content up to 4 displays
- Easy Plug and play splitter with advance manual EDID options
- Low-profile 18mm chassis with mounting brackets for flexible placement

Dolby Vision Dolby Atmos

INPUT	OUTPUT
1	8

2160p
4:4:4 60



4K60 1:8 HDMI Splitter

SP-0108-SCL

- Uncompressed HDMI distribution of 18Gbps 4K60 4:4:4 8bit video content
- Compatible with latest HDR video standards including HDR10, HDR10+, Dolby Vision and HLG
- Independent 4K to 1080p HDMI down scaling to support mixed resolution systems
- Analog & S/PDIF audio de-embed for distributing audio to an amplifier or DSP
- EDID management via RS-232 API, PC software, dip switches, or front panel buttons
- Automatic or API triggered CEC powers on/off all connected displays

Dolby Vision Dolby Atmos

INPUT	OUTPUT
1	2/4

2160p
4:4:4 60



4K60 1:2/1:4 Scaling HDMI Splitter

EXP-SP-0102-H2 | EXP-SP-0104-H2

- Supports up to 4K60 4:4:4 content up to 2 or 4 displays
- Each HDMI output supports scaling of 4K>1080p
- Easy Plug and play splitter with automatic EDID negotiation
- Low-profile chassis with mounting brackets for flexible placement

Dolby Vision









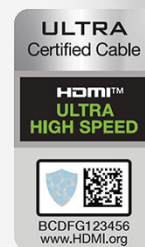
HDMI AND ACTIVE OPTICAL CABLES

NEXT GENERATION CONTENT NEEDS NEXT GENERATION CONTENT DELIVERY

Experience a next generation HDMI cable specifically designed to be future-proof, supporting 4K, 5K and 8K HDR content. It offers a unique feature set in delivering uncompressed HDMI content up to 48Gbps and compatibility with emerging HDMI technologies such as ALLM (Auto Low Latency Mode) & VRR (Variable Refresh Rate) using the latest in optical transmission technology.

Does your Active Optical Cable Match up to a WyreStorm HAOC?

-  **STRETCH**
20.3KG
-  **CRUSH**
30.5KG
-  **BEND**
2.0KG
-  **TWIST**
15.2KG
-  **SLAM**
0.4KG
-  **WIND**
NO BREAK



8K
48GBPS
HDMI 2.1

48Gbps 8K/60 HDR 4:4:4 Active Optical HDMI Cable | eARC, CEC, ALLM & VRR | ISF Certified

CAB-HAOC-FRL-10 | CAB-HAOC-FRL-15

- Uncompressed optical transmission of HDMI content up to 48Gbps: 8K (7680 x 4320p) 60Hz
- Compatible with all current and emerging HDR standards such as HLG (Hybrid Log Gamma), HDR-10 and HDR-10+, Dolby Vision, PQ (Perceptual Quantizer) and SL-HDR-1
- Ready for future HDCP 2.3 content encryption
- Compatible with new eARC HD audio standards for on-demand content from smart TV's
- Supports HDMI 2.1 FRL (Fixed Rate Link) 16/18b encoding and DSC (Display Stream Compression)
- True native HDMI communication ensures CEC and audio return communication between compatible devices
- Supports new HDMI2.1 features such as ALLM (Auto Low Latency Mode) and VRR (Variable Refresh Rate)
- Perfect for use in environments with excessive EM or RF interference

e-ARC **HDCP 2.3** **CEC** 



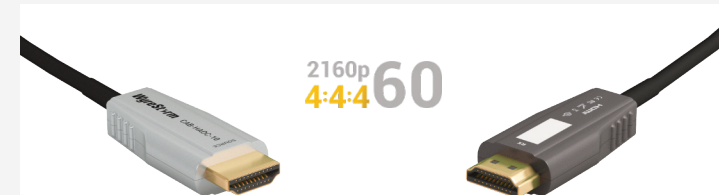
24Gbps 4-core Active Optical HDMI Cable | 4K HDR 4:4:4/60 | Kevlar strengthened | Detachable Head | Plenum & FT6 Rated

CAB-HAOC-15-C | 20-C | 30-C | 40-C | 50-C
(CPR SAFETY APPROVED)

CAB-HAOC-15-P | 20-P | 30-P | 40-P | 50-P
(PLENUM & FT6 SAFETY APPROVED)

- Removable HDMI head, available on 30m, 40m and 50m lengths
- 4-core optical Fiber transport for uncompressed transmission of HDMI up to 24Gbps
- Supports all content up to 4K/60 4:4:4 with HDR: HLG, HDR-10+ & Dolby Vision at 60Hz
- Perfect for use in environments with excessive EM interference
- Compatible with emerging HDMI technologies ALLM (Auto Low Latency Mode) & VRR (Variable Refresh Rate)
- High quality aluminium heads with Kevlar protected transmission cores
- Native HDMI communication supports ARC and CEC
- ISF certified

4K HDR **ARC** **HDCP 2.3** **CEC**



24Gbps 4-core Active Optical HDMI Cable | 4K HDR 4:4:4/60, ARC, CEC, ALLM & VRR | Kevlar strengthened | ISF Certified

CAB-HAOC-10 | 15 | 20
(CL3/FT4 SAFETY APPROVED)

- Available in 10m, 15m, 20m and 30m lengths
- 4-core optical Fiber transport for uncompressed transmission of HDMI up to 24Gbps
- Supports all content up to 4K/60 4:4:4 with HDR: HLG, HDR-10+ & Dolby Vision at 60Hz
- Perfect for use in environments with excessive EM interference
- Compatible with emerging HDMI technologies ALLM (Auto Low Latency Mode) & VRR (Variable Refresh Rate)
- High quality aluminium heads with Kevlar protected transmission cores
- Native HDMI communication supports ARC and CEC
- ISF certified

4K HDR **ARC** **HDCP 2.3**  **CEC**



WyreStorm Essentials 8K Ultra High Speed Cable

EXP-8KUHD-0.5M | 1M | 2M | 3M

- Ultra High Speed Performance: 48Gbps | 8K60Hz, 4K120Hz and up to 10K support
- Supports Dynamic HDR, eARC, VRR, QMS, QFT, ALLM
- Commercially Specified with VW-1 Rating
- Limited Lifetime Warranty

e-ARC **HDCP 2.3** **CEC**



NEXT GENERATION CONTENT NEEDS NEXT GENERATION CONTENT DELIVERY

Experience a next generation HDMI cable specifically designed to be future-proof, supporting 4K and 5K HDR content. It offers a unique feature set in delivering uncompressed HDMI content up to 24Gbps and compatibility with emerging HDMI technologies such as ALLM (Auto Low Latency Mode) & VRR (Variable Refresh Rate) using the latest in optical transmission technology.

Supporting 4K/60 4:4:4 10-bit HDR with HDCP 2.3 for compatibility with the latest 4K UHD content, HAOC cables also handle all multichannel audio formats and keep inter-device communication simple with support for both ARC and CEC.

Perfect for point to point use, or as part of a WyreStorm 4K UHD matrix switcher system where mirrored HDMI outputs can be used to their full potential, these cables are an ideal solution for any environment where copper transmission may be susceptible to electromagnetic interference.

With install experience as important as transmission quality, all CAB-HAOC cables have Kevlar protected cores and come ready spooled with color-coded heads improving installation and giving peace of mind; 30m+ models offer a detachable RX head that can be easily fed through conduit or trunking.

The perfect accessory to any WyreStorm 4K UHD distribution and an absolute must for today's and tomorrow's AV projects that require rock-solid delivery of the latest 24Gbps HDMI content.



The WyreStorm Difference:

With so many brands jumping on the Active Optical bandwagon, the market all of a sudden seems flooded with Hybrid HDMI options, but which ones are best? On the outside they all seem to say the same things and tick the key boxes; in an industry where everyone falls over themselves quoting big numbers to win favor among already bemused customers, WyreStorm does things a little differently and looks ahead. Ready not just for content available now but also emerging technologies of the future: 4K/60 content up to 24Gbps without chroma-sampling (10-bit 4:4:4), ALLM & VRR are all supported by our HAOC's.







While supporting the all-important buzz words such as HDCP 2.2, ARC and CEC (it is transparent communication, after all) we further concentrate on the things that others leave behind, namely build quality & reliability; plus being

Fiber, it's more than capable of passing 24Gbps HDMI content. WyreStorm HAOC's are rigorously tested to push their tolerance limits, ensuring they can withstand the strains of install. In developing this next generation cable, we stretched, crushed, slammed, bent, twisted and wound to ensure its Kevlar protection would outperform those that attempt to produce something as good as a WyreStorm HAOC.



All of our HAOC cables use SUP free packaging, meaning they can be recycled. Compared to the standard plastic spools, ours is made of cardboard and you can unspool the cable without even opening the box using our engineered dispenser.

Does your Active Optical Cable Match up to a WyreStorm HAOC?

 STRETCH 20.3KG	 CRUSH 30.5KG	 SLAM 0.4KG
 BEND 2.0KG	 TWIST 15.2KG	 WIND NO BREAK

What Our Customers Say...

|| installed the cable into a Sony XBR65A1E OLED from a Sony STRZA5000ES using HDMI 2 output.

First off, I noticed a speed increase in the image syncing and EDID was very fast compared to the extender set I had installed before the using the fiber cable.

I also noticed with an installed Apple TV there was a slight color variance, which has now gone. When using the UBPX-1000ES Sony Blu-ray the sync was also much faster. Only a few seconds! HDR content was magnificent.

Also switching to an HTPC was substantially faster and EDID stopped making strange things happen when switching from Apple TV to HTPC sources. ||

ARI TENN
Volutone

|| previously had purchased some fiber HDMI cables with the 18Gbps spec through Amazon when I originally thought to replace my Crestron cable. I tried 4 different HDMI Fiber Hybrid cables over the course of a few weeks and each of them passed images/video well but neither of those would consistently pass ARC. I ultimately returned each of those cables and kinda just gave up.

The WyreStorm cable has not only worked with ARC consistently now for a few hours which says that it will work moving forward but it's also produced a sharper and more detailed image with greater color saturation and specular highlights when driving HDR content. I think many people would say they don't see a difference but I can say without question that the image clarity and color depth is better using this cable than the Crestron cable or either of the 4 prior hybrid fiber cables that I purchased through Amazon.

I'm impressed and super pleased! ||

TYSON SCHERB
Jaymarc AV, Seattle WA



2160p
4:4:4 60

EXTENDER SOLUTIONS: AN EXTENSIVE RANGE OF SOLUTIONS FOR EVERY APPLICATION

WyreStorm continues to strive to be at the forefront of technology and meet consumer demands with the right product for the application, and our wide range of extenders are no exception. Boasting features such as 18Gbps transmission over a single cat6 cable or fiber, a mixture of USB, Ethernet, control and PoH, our extenders have been engineered in a way to fit the demands in an existing system, as well as feature rich enough to serve as a stand-alone.

With ease of installation at their heart, WyreStorm's broad range of extenders ensure just that with their slim form factor design and plug and play setup. Coupled with an excellent build quality and warranty, WyreStorm's extenders create the ultimate in staying power and longevity.

2160p
4:4:4 60

SIGNAL INTEGRITY FROM SOURCE TO DISPLAY

Fact: Not all signal compression is the same. Most WyreStorm extenders can transmit 18Gbps HDMI content over conventional HDBaseT. We achieve this using our VLC (Variable Lossless Compression) technology which adds light compression at the point of transmission and re-builds the signal at the receiver without any visual degradation or artefacting.



FIBER REVOLUTION

WyreStorm products featuring fiber currently include a multimode fiber transmission card for the modular H2XC matrix switcher and receiver, extender set supporting transmissions up to 300m/984ft, and our line of Active Optical HDMI cables spanning 10m, 15m, 20m and 30m distances.



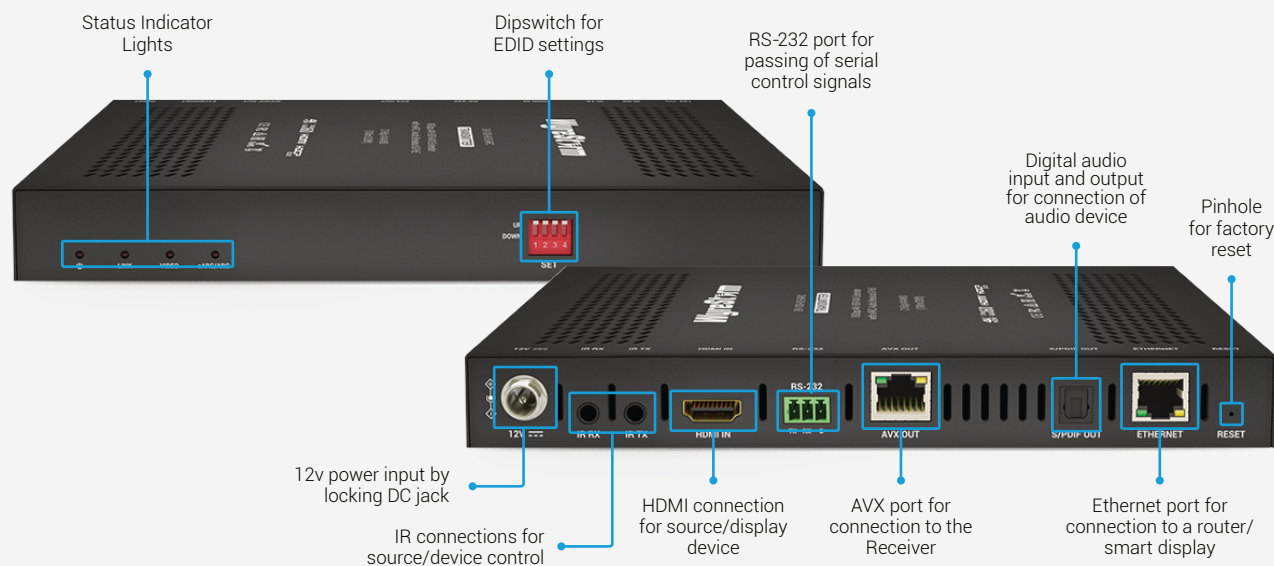
ENHANCED AUDIO WITH ARC

Free the audio from the on-demand content on your smart TV. The HDBaseT specification enables digital audio from a Smart TV to be sent back to the transmitter and broken out to an AVR or audio system. This has benefits for the installer as it means additional AVR switching commands aren't required thanks to the transparent ARC communication.



HIGH SPEED USB DATA TRANSFER

Increasing the auxiliary channel within the HDBaseT™ link means that 200Mbps USB 2.0 data can be sent bidirectionally, at the same time as 4K video, audio, control and Ethernet. Not restricted to simple HID's like keyboard and mice, HDBaseT™ 2.0 can handle full HD webcams, interactive white boards and even USB flash drives.



Please contact your authorized WyreStorm representative or marketing@wyrestorm.com for product comparison tables.

2K	4K UHD	4:4:4/60
300m	300m	300m

2160p
4:4:4 60



300m 4K60 Fiber Extender

EXF-300-H2

- Supports up to 4K60 4:4:4 content
- Bidirectional IR or RS-232 to control peripheral devices
- Ideal for long distance transmissions with high-levels of EM or RF interference



2K	4K UHD	4:4:4/60
100m	100m	100m

2160p
4:4:4 60



100m 4K60 AVX Extender with eARC

EX-100-H2-EARC

- Supports up to 4K60 4:4:4 content
- Compatible with eARC displays for transmitting high-bitrate audio formats including Dolby Atmos, DTS:X and backwards compatible with standard ARC
- 3 audio modes: eARC, S/PDIF passthrough and HDMI input de-embed
- Flexible cabling options. Supports different transmission distance over CAT5e, CAT6a and CAT7 cables



2K	4K UHD
100m	100m



100m 4K HDBaseT Extender with USB

EX-100-H2

- Supports up to 4K60 4:2:0 content
- USB data transfers of up to 190Mbps
- High-speed USB 2.0 passthrough
- Backwards compatible with HDBaseT 1.0 transmission and receiving devices



2K	4K UHD	4:4:4/60
100m	70m	70m



70m 4K60 HDBaseT Extender

EX-100-KVM-IP

- Supports up to 4K60 4:4:4 content
- Bidirectional IR, RS232 and CEC control



2K	4K UHD	4:4:4/60
100m	70m	70m

2160p
4:4:4 60



70m 4K60 HDBaseT Extender

EX-70-H2

- Supports up to 4K60 4:4:4 content
- Bidirectional IR, RS232 and CEC control



2K	4K UHD	4:4:4/60
70m	35m	35m

2160p
4:4:4 60



35m 4K60 HDBaseT Extender with ARC

EX-35-H2-ARC

- Dynamic visually lossless compression enables extension of up to 4K HDR content at 60Hz to 35m/115ft
- Supports full bandwidth HDMI content up to 17.8Gbps
- Compatible with the latest HDR standards, including HDR-10 and HLG content, with support for Dolby Vision™ up to 30Hz
- ARC compatible receiver extracts 5.1 audio from TV and sends over HDBaseT to transmitter, S/PDIF input on receiver also included
- 2-way PoH for maximum flexibility during installation
- Bidirectional IR and RS-232



2K	4K UHD	4:4:4/60
70m	35m	35m

2160p
4:4:4 60



35m 4K60 HDBaseT Extender

EX-35-H2

- Dynamic visually lossless compression enables extension of up to 4K HDR content at 60Hz to 35m/115ft
- Supports full bandwidth HDMI content up to 17.8Gbps
- Compatible with the latest HDR standards, including HDR-10 and HLG content, with support for Dolby Vision™ up to 30Hz
- 2-way PoH for maximum installation flexibility and convenience
- Bidirectional IR, RS-232 and CEC



2K	4K UHD	4:4:4/60
70m	35m	-



70m 4K HDBaseT Extender

EX-70-G2

- Supports 4K60 4:2:0 content
- Bidirectional IR, RS232 and CEC control



2K	4K UHD	4:4:4/60
80m	-	-



80m KVM UTP Extender

EX-80-KVM

- Supports up to 1080p60 content
- Supports HID devices and USB 2.0 data transfers bidirectionally



2K	4K UHD	4:4:4/60
40m	-	-



40m 1080p UTP Extender

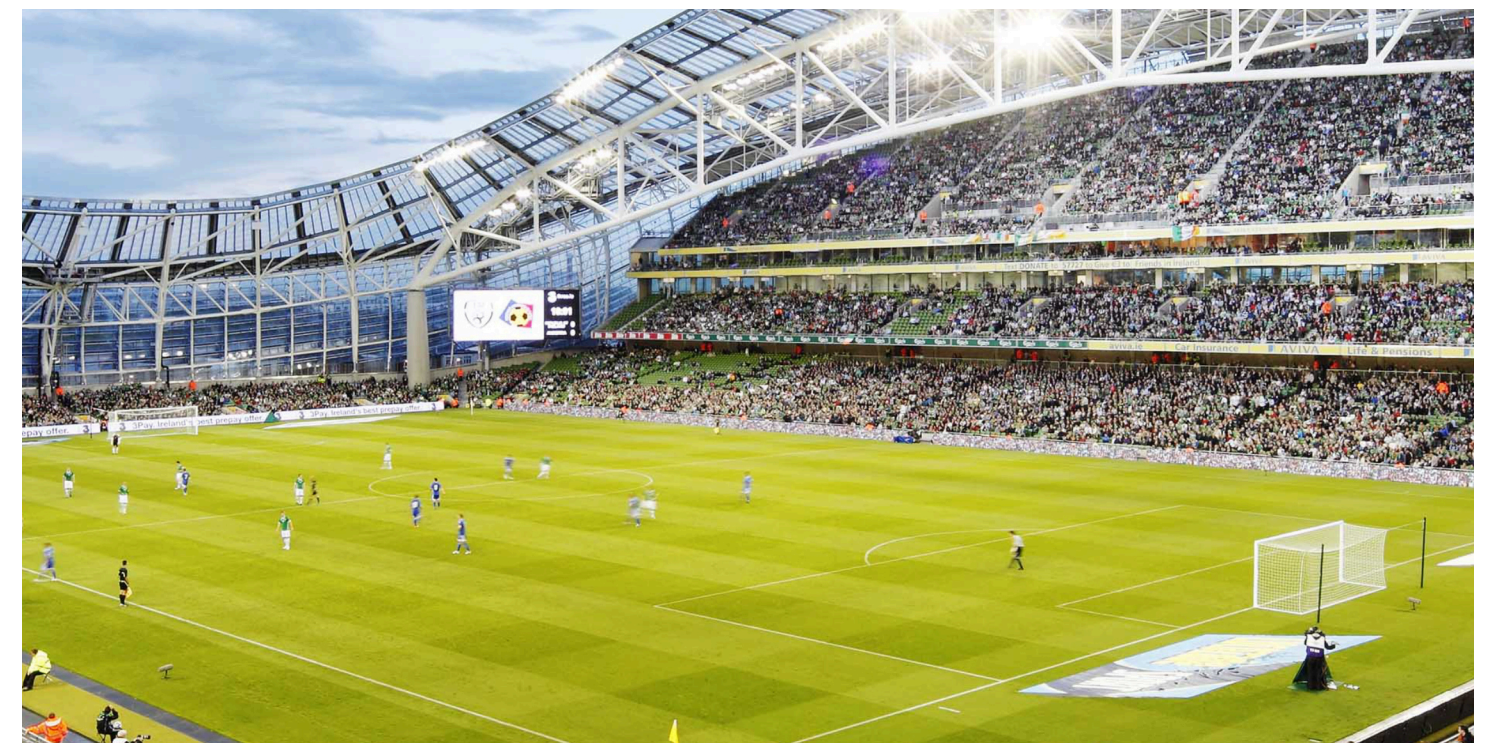
EX-40-G3

- Supports up to 1080p60 content
- IR passthrough RX>TX for source control
- Simple signal equalization via slider switch



THE RIGHT EXTENDER FOR THE RIGHT APPLICATION, WYRESTORM HAS YOU COVERED.

	EX-40-G3	EX-80-KVM	EX-70-G2	EX-35-H2	EX-35-H2-ARC	EX-70-H2	EX-100-H2	EX-100-H2-EARC	EXF-300-H2
Audio + Video									
HDCP	1.4	1.4	2.2	2.2	2.2	2.2	2.2	2.2	2.2
1080p Distance	40m/131ft	80m/262ft	70m/230ft	70m/230ft	70m/230ft	100m/328ft	100m/328ft	100m/328ft	300m/984ft
4K Distance	✗	✗	35m/115ft	35m/115ft	35m/115ft	70m/230ft	100m/328ft	100m/328ft	300m/984ft
Max. Resolution	1920x1200p @60Hz	1920x1200p @60Hz	2160@60 4:2:0	2160p@60 12-bit 4:2:2 (HDR)	2160p@60 12-bit 4:2:2 (HDR)	2160p@60 12-bit 4:2:2 (HDR)	2160p@30 8-bit 4:4:4 (HDR)	2160p@60 12-bit 4:2:2 (HDR)	2160p@60 12-bit 4:2:2 (HDR)
HDR (High Dynamic Range)	✗	✗	✗	✓	✓	✓	✓	✓	✓
Digital Audio Passthrough	✗	✗	✗	✗	✓	✗	✗	✓	✗
Analog Audio Passthrough	✗	✗	✗	✗	✗	✗	✓	✗	✗
Source Audio Breakout	✗	✗	✗	✗	✓	✗	✓	✓	✗
HDMI Source Loop Output	✗	✗	✗	✗	✗	✗	✗	✗	✗
ARC (Audio Return Channel)	✗	✗	✗	✗	✓	✗	✗	✓ eARC	✗
Automatic Signal Compression	✗	✗	✗	✓	✓	✓	✗	✓	✓
Transmission Technology	UTP	UTP	HDBT Class B	HDBT Class B	HDBT Class B	HDBT Class A	HDBT Class C	AVX	Multi-Mode Fibre
Communication									
Ethernet	✗	✗	✗	✗	✗	✗	✓	✓	✗
USB 2.0	✗	✓	✗	✗	✗	✗	✓	✗	✗
Enhanced 4K Compatibility	✗	✗	✗	✓	✓	✓	✓	✓	✓
Control									
IR (Bidirectional)	1-way	✗	✓	✓	✓	✓	✓	✓	✓
RS-232 (Bidirectional)	✗	✗	✓	✓	✓	✓	✓	✓	✓
CEC Pass-Through	✗	✗	✓	✓	✓	✓	✓	✓	✗
Power									
PoH	PoC	2-way	2-way	2-way	2-way	2-way	2-way	2-way	✗



AV Essentials Made Easy

WyreStorm Essentials has been developed as a simple and affordable line of AV distribution products for home and light commercial installations. With a wide range of models, WyreStorm Essentials are plug and play 4K, HD, and home solutions for just about every application environment.

WyreStorm warrants that all products in the Essentials range are to be free from defects in material and workmanship under normal use for a period of two (2) years from the date of purchase from WyreStorm. Products must be purchased from an authorized WyreStorm dealer or through an authorized distribution partner's dealer.

WyreStorm Essentials



8K

8K60 2x1 & 4x1 HDMI Switcher
EXP-SW-0201-8K | EXP-SW-0401-8K

- Supports resolutions of up to 8K@60Hz, 4K@120Hz or 10K@120Hz (Using DSC passthrough)
- HDMI audio de-embed or ARC via S/PDIF
- Supports HDMI 2.1 features such as QFT (Quick Frame Transport), QMS (Quick Media Switching), ALLM (Auto Low Latency Mode) and VRR (Variable Refresh Rate)
- DSC 1.2a passthrough to achieve resolutions of up to 10K@120Hz
- Supports full CEC passthrough
- Full EDID management via DIP switches

8K60 1:2 HDMI Splitter
EXP-SP-0102-8K

- A true plug-and-play HDMI splitter, supporting up to two 8K displays to one source
- Scales 8K>4K or 4K>1080p on output 2
- DSC 1.2 passthrough to achieve resolutions of up to 10K@120Hz
- Supports HDMI 2.1 features such as QFT (Quick Frame Transport), QMS (Quick Media Switching), ALLM (Auto Low Latency Mode) and VRR (Variable Refresh Rate)
- Full EDID management via DIP switches

EXP-SP-0102-8K

EXP-SW-0201-8K

EXP-SW-0401-8K

EXP-SP-0102-8K

EXP-SW-0201-8K

EXP-SW-0401-8K

EXP-SP-0102-8K

EXP-SW-0201-8K

EXP-SW-0401-8K

EXP-SP-0102-8K

EXP-SW-0201-8K

EXP-SW-0401-8K

EXP-SP-0102-8K

EXP-SW-0201-8K

EXP-SW-0401-8K

EXP-SP-0102-8K

EXP-SW-0201-8K

EXP-SW-0401-8K

EXP-SP-0102-8K

EXP-SW-0201-8K

EXP-SW-0401-8K

EXP-SP-0102-8K

EXP-SW-0201-8K

EXP-SW-0401-8K

EXP-SP-0102-8K

EXP-SW-0201-8K

EXP-SW-0401-8K

EXP-SP-0102-8K

EXP-SW-0201-8K

EXP-SW-0401-8K

EXP-SP-0102-8K

EXP-SW-0201-8K

EXP-SW-0401-8K

EXP-SP-0102-8K

EXP-SW-0201-8K

EXP-SW-0401-8K

EXP-SP-0102-8K

EXP-SW-0201-8K

EXP-SW-0401-8K

EXP-SP-0102-8K

EXP-SW-0201-8K

EXP-SW-0401-8K

EXP-SP-0102-8K

EXP-SW-0201-8K

EXP-SW-0401-8K

EXP-SP-0102-8K

EXP-SW-0201-8K

EXP-SW-0401-8K

EXP-SP-0102-8K

EXP-SW-0201-8K

EXP-SW-0401-8K

EXP-SP-0102-8K

EXP-SW-0201-8K

EXP-SW-0401-8K

EXP-SP-0102-8K

EXP-SW-0201-8K

EXP-SW-0401-8K

EXP-SP-0102-8K

EXP-SW-0201-8K

EXP-SW-0401-8K

EXP-SP-0102-8K

EXP-SW-0201-8K

EXP-SW-0401-8K

EXP-SP-0102-8K

EXP-SW-0201-8K

EXP-SW-0401-8K

EXP-SP-0102-8K

EXP-SW-0201-8K

EXP-SW-0401-8K

EXP-SP-0102-8K

EXP-SW-0201-8K

EXP-SW-0401-8K

EXP-SP-0102-8K

EXP-SW-0201-8K

EXP-SW-0401-8K

EXP-SP-0102-8K

EXP-SW-0201-8K

EXP-SW-0401-8K

EXP-SP-0102-8K

EXP-SW-0201-8K

EXP-SW-0401-8K

EXP-SP-0102-8K

EXP-SW-0201-8K

EXP-SW-0401-8K

EXP-SP-0102-8K

EXP-SW-0201-8K

EXP-SW-0401-8K

EXP-SP-0102-8K

EXP-SW-0201-8K

EXP-SW-0401-8K

EXP-SP-0102-8K

EXP-SW-0201-8K

EXP-SW-0401-8K

EXP-SP-0102-8K

EXP-SW-0201-8K

EXP-SW-0401-8K

EXP-SP-0102-8K

EXP-SW-0201-8K

EXP-SW-0401-8K

EXP-SP-0102-8K

EXP-SW-0201-8K

EXP-SW-0401-8K

EXP-SP-0102-8K

EXP-SW-0201-8K

EXP-SW-0401-8K

EXP-SP-0102-8K

EXP-SW-0201-8K

EXP-SW-0401-8K

EXP-SP-0102-8K

EXP-SW-0201-8K

EXP-SW-0401-8K

EXP-SP-0102-8K

EXP-SW-0201-8K

EXP-SW-0401-8K

EXP-SP-0102-8K

EXP-SW-0201-8K

EXP-SW-0401-8K

EXP-SP-0102-8K

EXP-SW-0201-8K

EXP-SW-0401-8K

EXP-SP-0102-8K

EXP-SW-0201-8K

EXP-SW-0401-8K

EXP-SP-0102-8K

EXP-SW-0201-8K

EXP-SW-0401-8K

EXP-SP-0102-8K

EXP-SW-0201-8K

EXP-SW-0401-8K

EXP-SP-0102-8K

EXP-SW-0201-8K

EXP-SW-0401-8K

EXP-SP-0102-8K

EXP-SW-0201-8K

EXP-SW-0401-8K

EXP-SP-0102-8K

EXP-SW-0201-8K

EXP-SW-0401-8K

EXP-SP-0102-8K

EXP-SW-0201-8K

EXP-SW-0401-8K

EXP-SP-0102-8K

EXP-SW-0201-8K

EXP-SW-0401-8K

EXP-SP-0102-8K

EXP-SW-0201-8K

EXP-SW-0401-8K

EXP-SP-0102-8K

EXP-SW-0201-8K

EXP-SW-0401-8K

EXP-SP-0102-8K

EXP-SW-0201-8K

EXP-SW-0401-8K

EXP-SP-0102-8K

EXP-SW-0201-8K

EXP-SW-0401-8K

EXP-SP-0102-8K

EXP-SW-0201-8K

EXP-SW-0401-8K

EXP-SP-0102-8K

EXP-SW-0201-8K

EXP-SW-0401-8K

EXP-SP-0102-8K

EXP-SW-0201-8K

EXP-SW-0401-8K

EXP-SP-0102-8K

EXP-SW-0201-8K

EXP-SW-0401-8K

EXP-SP-0102-8K

EXP-SW-0201-8K

EXP-SW-0401-8K

EXP-SP-0102-8K

EXP-SW-0201-8K

EXP-SW-0401-8K

EXP-SP-0102-8K

EXP-SW-0201-8K

EXP-SW-0401-8K

EXP-SP-0102-8K

EXP-SW-0201-8K

EXP-SW-0401-8K

EXP-SP-0102-8K

EXP-SW-0201-8K

EXP-SW-0401-8K

EXP-SP-0102-8K

EXP-SW-0201-8K

EXP-SW-0401-8K

EXP-SP-0102-8K

EXP-SW-0201-8K

EXP-SW-0401-8K

EXP-SP-0102-8K

EXP-SW-0201-8K

EXP-SW-0401-8K

EXP-SP-0102-8K

EXP-SW-0201-8K

EXP-SW-0401-8K

EXP-SP-0102-8K

EXP-SW-0201-8K

EXP-SW-0401-8K

EXP-SP-0102-8K

2160p
4:4:4 60



HDMI Audio Extractor

EXP-CON-AUD-H2

- Digital S/PDIF and analog L/R HDMI audio de-embed with HDMI passthrough
- 18Gbps HDMI passthrough, including up to 4K HDR 4:4:4/60
- Three gear sliding switch supporting passthrough, 2.0ch and 5.1 audio EDID
- Compact appearance and easy to install



2160p
4:4:4 60



Dolby™ & DTS™ 7.1 Downmixer

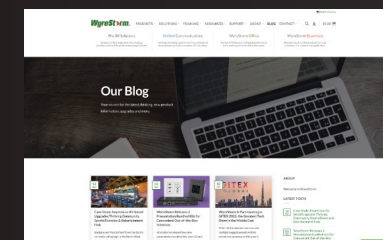
EXP-CON-H2-DD

- Audio de-embedding via S/PDIF or stereo RCA with Dolby & DTS 7.1 down-mixing
- Re-embed down-mixed stereo audio to HDMI
- Scales incoming 4K HDR content to 1080p
- S/PDIF output switchable between pass-through and downmix



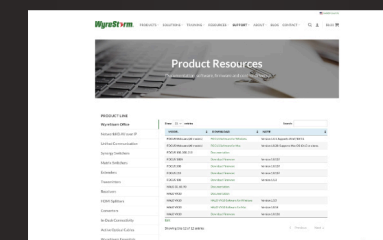
NEW WEBSITE FEATURES

WyreStorm has been working hard to make the new website better than before! We have re-engineered the look and functionality of our site to help you navigate and get to the things you need quicker.



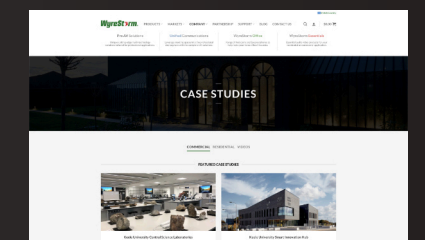
WYRESTORM BLOG

The WyreStorm blog page brings you the most up-to-date company and product information. Additionally we provide un-bias insights into news and trends of the AV industry.



PRODUCT RESOURCES

Need product materials in a hurry? No problem. WyreStorm have provided all documentation, firmware, software and other downloads in one place, making it easier for you to get what you need.



CASE STUDIES

You can see the most recent installs we have been involved with over multiple markets. Simply click on the buttons to delve straight in and read how we were involved in the installs.

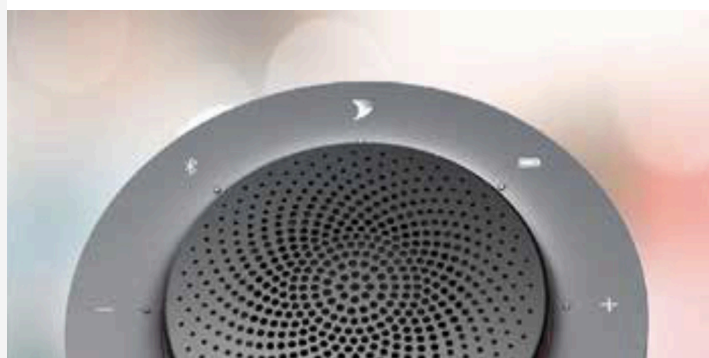


WyreStorm OFFICE

A brand new line of products designed to simplify your work space, increase productivity and make the work day flow as smoothly as possible. Aiming for an effortless plug & play video conference experience, the new WyreStorm Office line offers a range of premium webcams, as well as USB speakerphones.



The Focus range of WyreStorm Office webcams are designed with a premium wide-angle lens, advanced CMOS sensors, and wide dynamic range (WDR) technology. Depending on the model, Focus webcams can seamlessly stream 1080p or 4K distortion-less images to your computer for crystal clear video calls.



The outstanding audio quality of the Halo range of speakerphones can ensure everyone is heard during conference calls, making your meeting more efficient. Coming in three different models, all include 4 built-in mics arranged in a 360° array, allowing for a clear and natural omni-directionally voice pick-up pattern within 16ft or 5m.



1080p HD Ultra-wide angle USB Webcam with Integrated Mic

FOCUS 100

- Supports Wide Dynamic Range (WDR) for clear image in any light
- Auto backlight compensation and white balance
- 100° Wide-angle lens that captures a wide field of view
- AI noise-cancelling microphone with max 5m/16ft pickup range
- Supports Windows/MacOS App for video configuration & color adjustment
- Works with Zoom, Teams, Skype, Google Meet, etc.



4K UHD Ultra-Wide angle ePTZ Webcam with Integrated Mic

FOCUS 200

- Supports Wide Dynamic Range (WDR) for clear image in any light
- 106° Wide-angle lens that captures a wide field of view
- AI backlight compensation & low light compensation
- AI noise-cancelling mics, 8x digital zoom, ePTZ
- Supports 4K/30fps, 1080p/60fps & 720p/90fps
- Supports Windows/MacOS App for video configuration & color adjustment



4K UHD 120° Wide Angle ePTZ Webcam with AI Tracking

FOCUS 210

- 120° Wide-angle lens that captures a wide field of view
- 8x Digital zoom, ePTZ, auto framing, presenter tracking
- AI backlight compensation & low light compensation
- Dual AI noise-cancelling mics with max 5m/16ft pickup range
- Supports 4K/30fps, 1080p/60fps & 720p/90fps
- Supports wide dynamic range (WDR) for clear image in any light
- Supports Windows/MacOS App for video configuration & color adjustment



Halo Series All In One Video Bar

HALO-VX10 v2

- 120° Wide-Angle 4K Camera Captures Crystal Clear Video
- Wide Dynamic Range with AI Enhanced Lighting
- Supports up to 90 FPS High Framerate Video Capture
- 4-Microphone Array with Echo Cancellation & Auto Gain Control
- Supports up to 3 HALO-COM-MIC extension microphones
- 3.5mm analog audio output for connecting external speakers



Halo Series All In One Video Bar

HALO-COM-MIC

- Cascade 3 times for expanded mic pick-up range
- Supports AEC, AGC & noise suppression
- Beam-forming microphone array
- Small & compact design with a minimal footprint
- Convenient mute toggle button for microphone



Portable Plug and Play USB Conference Speakerphone

HALO 30

- Acoustic echo cancellation & noise reduction
- Voice enhancement & 360° voice pickup
- Wide coverage, AGC voice balance, full-duplex audio
- Plug & play, universal compatibility



Portable Plug and Play USB and Bluetooth Conference Speakerphone

HALO 60

- True full-duplex, ideal for multi-person conference
- Acoustic echo cancellation & noise reduction
- Voice enhancement & 360° voice pickup
- Up to 115dB speaker & AGC voice balance
- Plug & play, truly wireless, universal compatibility
- Bluetooth connectivity with answer/end call buttons for connection of smartphones
- Built-in 2500mAh battery for up to 10 hours of use



4K/60 USB-C Speakerphone with Dual Video Output & Charging

HALO 90

- All-in-one design, high-performance speakerphone with USB-C docking
- HDMI/USB-C output with up to 4K@60Hz video resolution
- Latest dual USB 3.2 10Gbps interface; lightning-speed data transmission
- Able to supply power to PC with up to 85W
- 4x Omni-directional mic & 1x speaker for efficient conferencing



WyreStorm®

Powerful. Reliable. Simple.

WyreStorm Technologies

Tech Valley Park
27 Wood Road, Suite 100
Round Lake, NY 12151 USA
Tel: +1 518-289-1293

WYRESTORM.COM



Follow us on social media to stay up to date with all things WyreStorm.