



# Midra™ 4K

PRESENTATION SWITCHERS

The **Midra™ 4K series** presentation switchers are ideal for small/medium-sized fixed installations and live environments requiring the highest reliability, the lowest latency, unrivaled ease of use, optimal image quality and state-of-the-art live 4K processing features.

## VERSATILE 4K CONNECTIVITY

The **Midra™ 4K** series presentation switchers feature ten inputs, including eight 4K60 inputs (four HDMI 2.0, two 12G-SDI and two DisplayPort 1.2) and two 1080p60 inputs with user-selectable HDMI and SDI connectors. They also have two 4K60 outputs, each with mirrored HDMI and SDI connectors, with 4K60 capacities for Programs. Depending on the product, these two outputs can be combined to create a dual-output Hard/Soft Edge display or configured as two independent Program outputs or one Program output and one Auxiliary output. In all cases, a dedicated multiviewer with resizable widgets is available to monitor the Program & Preview screens and all the connected sources.



## QUALITY WITHOUT COMPROMISE

Based on the extremely robust and reliable **Midra™ 4K** platform as well as on Analog Way's 5th generation scaling engine inherited from the LivePremier™ presentation systems, the **Midra™ 4K** series features ultra-low latency 4K60 10-bit 4:4:4 image processing, genlock synchronization, uncompromising video quality, true seamless switching, 3D Look Up Tables (LUT) management for SDR/HDR support conversion and color calibration and HDCP 2.2 compatibility, making it the ideal choice to drive corporate events, boardrooms, breakout sessions or medium scale LED video wall installations.

## ADVANCED FUNCTIONALITIES

The **Midra™ 4K** series presentation switchers offer dozens of powerful functionalities to produce stunning AV presentations: custom output formats, AOI, Luma and Chroma keying, Cut and Fill at input level, advanced video effects... They come standard with the ability to easily de-embed, embed and process digital audio on all the inputs and outputs. An option is also available to add support for Dante™ audio networking (32x32).

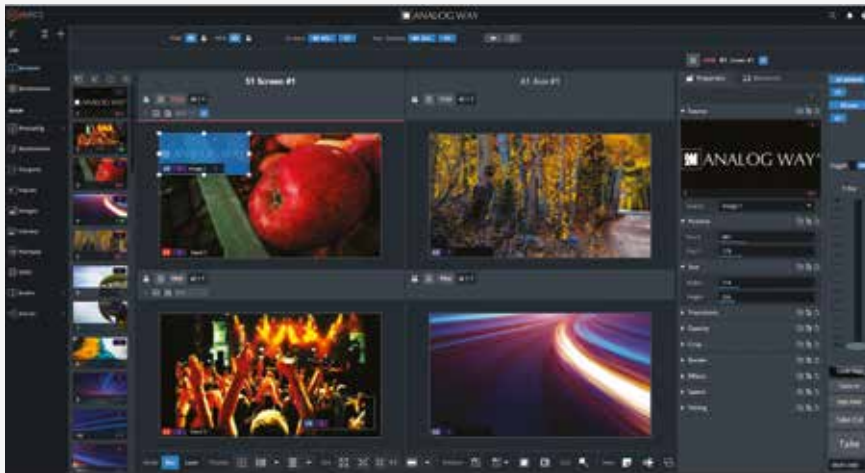
The **Midra™ 4K** series also provides an IP streaming functionality, allowing to broadcast over IP any input or output to an on-line web service such as Youtube, Facebook, Twitch.tv, and so on, or to a private network, to display the content or to edit it thanks to software like OBS Studio.



## FLEXIBLE CONTROL OPTIONS

The **Midra™ 4K** series presentation switchers are designed to be entirely operated from the easy-to-use front panel keyboard and graphic display. Ease of setup and flawless control of the presentations are ensured by the unmatched, on-board intuitive Web RCS, an HTML5-based user interface with live source thumbnails. All products in the range feature Ethernet control via a standard TCP/IP socket connection supported by all major third-party control systems and SNMP management. They can also be controlled by the free Crestron driver as well as by AW VideoCompositor, Analog Way's unique drag and drop customizable Crestron user interface.

Additionally, they can be operated by a comprehensive range of remote control panel options such as the powerful event controller RC400T or the compact Control Box<sup>3</sup> and Shot Box<sup>2</sup>. The **Midra™ 4K** series is also compatible with various third-party solutions or controller such as Companion, Universe or SKAARHOJ Air Fly Pro..





## QUICK OVERVIEW

Midra™ 4K models	QuickVu 4K	QuickMatrix 4K	Pulse 4K	Eikos 4K
Inputs	10	10	10	10
Mirrored outputs (HDMI + SDI)	2	2	2	2
Dedicated multiviewer	✓	✓	✓	✓
Mixer mode (1 x PGM + 1 x AUX)	✓		✓	✓
Matrix mode (2 x PGM)		✓	✓	✓
Hard/Soft Edge mode (1 x PGM)				✓
Background layer	image	image	image or live source	image or live source
4K split layers per system	2	4	4	4
4K foreground layer (still image)	✓	✓	✓	✓
IP RTMP-based Streaming	✓	✓	✓	✓

## OPTIONAL ANALOG AND DANTE™ AUDIO NETWORKING CARD

- De-embed audio from sources and route directly to Dante™ network
- Re-embed audio from external audio processor for sending to display
- 32x32 Dante™ channels @48 kHz
- Dual redundancy Ethernet ports
- 2 analog stereo mini jack line inputs 1/8" (3.5 mm)
- 2 analog stereo mini jack line outputs 1/8" (3.5 mm)



**QuickVu 4K**



**QuickMatrix 4K**



**PRODUCT PICTURES**

**Pulse 4K**



**Eikos 4K**



# THE MIDRA™ 4K HAS AN EXTENSIVE ECOSYSTEM FOR CONTROL AND MANAGEMENT

**Control Box<sup>3</sup>**



**AW VideoCompositor**



**Web RCS**



**Control Application**



**Shot Box<sup>2</sup>**



## Midra™ 4K Products

**Crestron® Driver**



**RC400T**



**SKAARHOJ**



**Front Panel**



**Control Software**



Some controllers or drivers might not be available. Contact your sales manager for more information.

# QuickVu 4K

Ref. QVU-4K



**QuickVu 4K** is a 4K60 video mixer and seamless presentation switcher, with ten inputs, one PGM out-put, one AUX output and one dedicated Multiviewer.

## **QuickVu 4K at a glance :**

- Compact 2RU rugged chassis
- Ten inputs (8x 4K60 + 2x 1080p inputs) + two multiplug outputs
- 1x 4K60 PGM output + 1x full HD AUX output
- One dedicated multiviewer with resizable widgets
- Two 4K split layers (or one 4K mixing layer)
- Real-time 10-bit 4:4:4 video processing compliant with HDR10 & HLG
- IP Streaming of any input or output at up to 1080p30
- Intuitive HTML5-based user interface with live source thumbnails
- Advanced audio processing and dynamic routing
- Optional analog and Dante™ audio networking card (32x32 channels)



## KEY FEATURES

10 seamless inputs including 8x 4K60 inputs and 2x 2K60 inputs

Two outputs with mirrored 12G-SDI and HDMI 2.0 plugs :

- 1 PGM output up to 4K60, with 1 still image background + 1 mixing 4K layer (or 2 split layers) + 1 foreground 4K image layer

- 1 AUX output up to 1080p60

1 dedicated multiviewer with resizable widgets, including clocks, countdown and timers (max. resolution 2560x1600@60)

4K60 10-bit 4:4:4 processing - ultra low latency (16 msec @60Hz)

Compliant with HDR10 and HLG - Built-in SDR/HDR converters thanks to 3D Look up Tables (LUT)

Seamless crossfade on all 10 sources

Versatile 4K connectivity: HDMI 2.0, DP1.2, 12G-SDI

IP Streaming of any input or output

8x 4K concurrent still images with alpha channel support

Advanced EDID management

Compatible with HDCP 1.4 and HDCP 2.2

Web RCS: highly intuitive HTML5-based user interface

Live video thumbnails shown on GUI

Built-in SNMPv2-MIB

Fully configurable and operable from the front panel

Advanced audio processing

Innovative 'Quick Preset' feature

Custom output formats for non-standard display applications

Area of Interest feature to customize active areas of outputs

Freeze of inputs, layers and screens

Cut and Fill at input level

Easily create and recall memories on your screen and AUX outputs

Fully functional simulator for offline configuration and practice

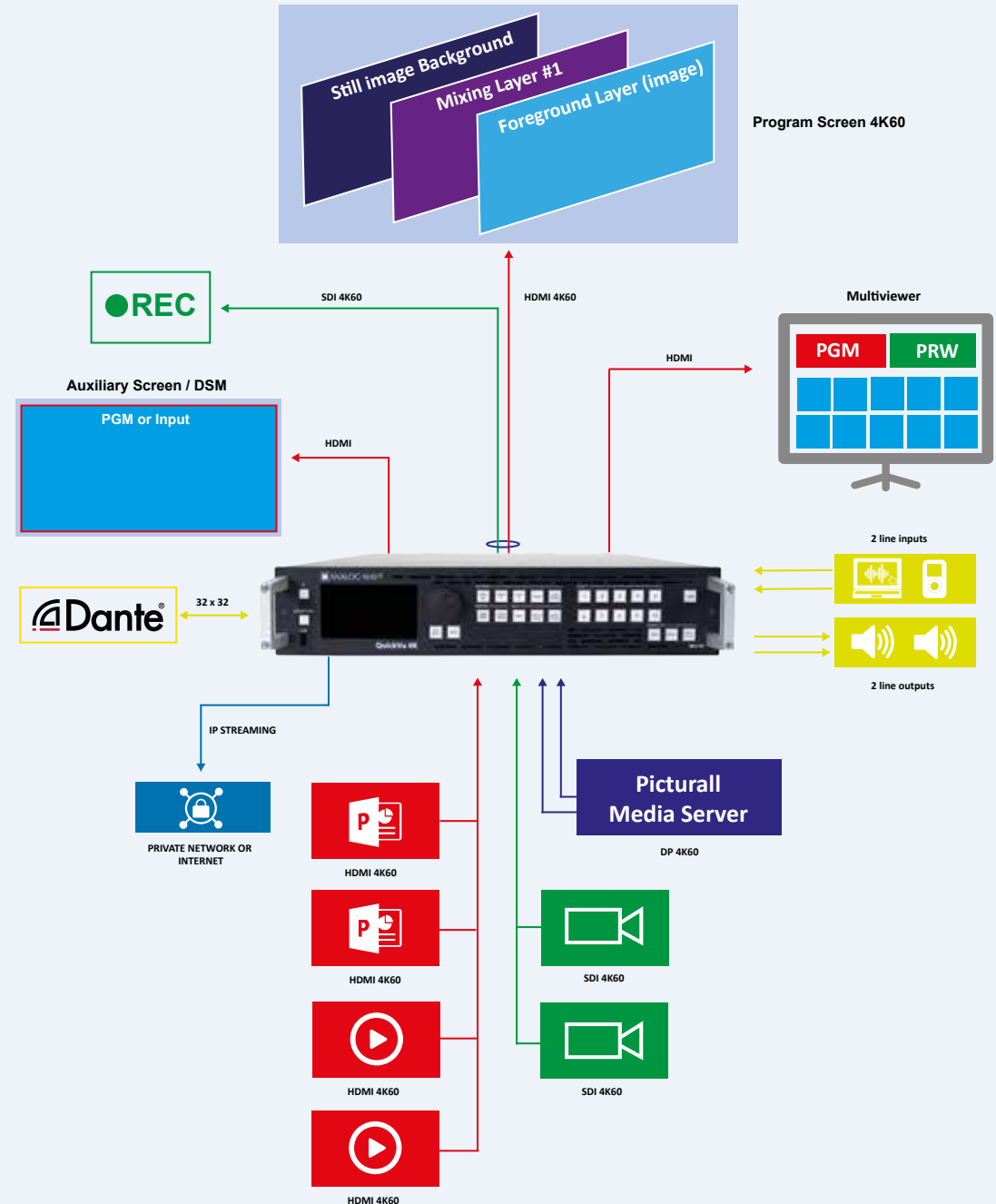
Quiet: 45dB average noise at 1m

Dedicated BNC with loop for Genlock, Blackburst and tri-level sync

Remote services and maintenance

Backup and restore functions

## QuickVu 4K with Dante™ audio option



# QuickMatrix 4K

Ref. QMX-4K



**QuickMatrix 4K** is a 4K60 multi-layer video mixer and seamless presentation switcher, with ten inputs, two PGM outputs and one dedicated Multiviewer.

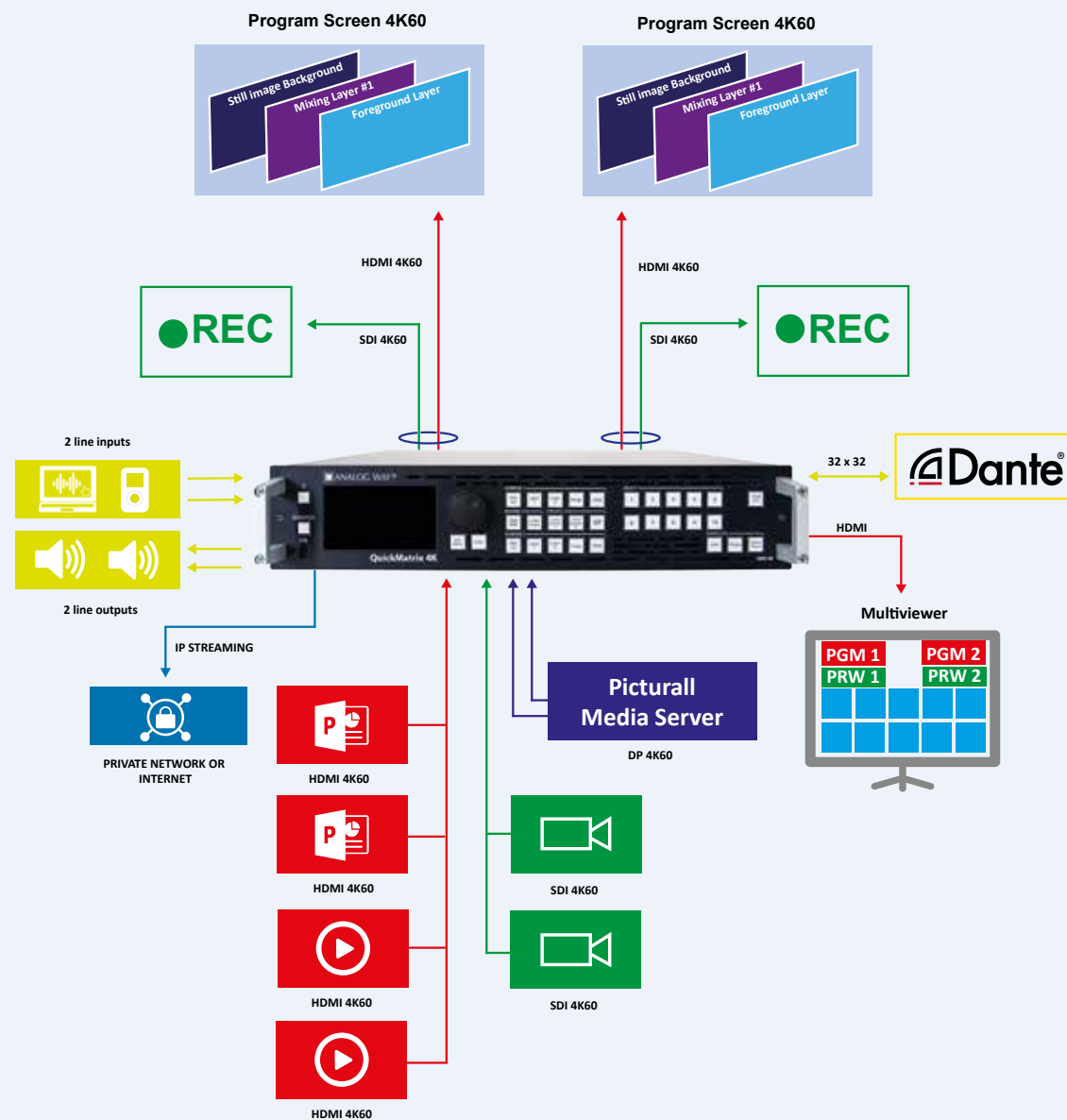
## **QuickMatrix 4K at a glance :**

- Compact 2RU rugged chassis
- Ten inputs (8x 4K60 + 2x 1080p inputs)
- Two 4K60 PGM outputs with mirrored 12G-SDI and HDMI 2.0 plugs
- Dedicated multiviewer with resizable widgets
- Real-time 10-bit 4:4:4 video processing compliant with HDR10 & HLG
- IP Streaming of any input or output at up to 1080p30
- Two 4K split layers (or one 4K mixing layer) per output
- Intuitive HTML5-based user interface with live source thumbnails
- Advanced audio processing and dynamic routing
- Optional analog and Dante™ audio networking card (32x32 channels)

## KEY FEATURES

- 10 seamless inputs including 8x 4K60 inputs and 2x 2K60 inputs
- Two 4K60 PGM outputs with mirrored 12G-SDI and HDMI 2.0 plugs :
  - 1 still image background + 1 mixing 4K layer (or 2 split layers) + 1 foreground 4K image layer per output
- 1 dedicated multiviewer with resizable widgets, including clocks, countdown and timers (max. resolution 2560x1600@60)
- Real-time 4K60 10-bit 4:4:4 processing
- Ultra low latency (16 msec @60Hz)
- Compliant with HDR10 and HLG - Built-in SDR/HDR converters thanks to 3D Look up Tables (LUT)
- Seamless crossfade on all sources
- Versatile 4K connectivity: HDMI 2.0, DP1.2, 12G-SDI
- IP Streaming of any input or output
- 8x 4K concurrent still images with alpha channel support
- Advanced EDID management
- Compatible with HDCP 1.4 and HDCP 2.2
- Web RCS: highly intuitive HTML5-based user interface
- Live video thumbnails shown on GUI
- Built-in SNMPv2-MIB
- Fully configurable and operable from the front panel
- Advanced audio processing and dynamic routing
- Innovative 'Quick Preset' feature
- Custom output formats for non-standard display applications
- Area of Interest feature to customize active areas of outputs
- Freeze of inputs, layers and screens
- Cut and Fill at input level
- Easily create and recall memories on your screen and AUX outputs
- Fully functional simulator for offline configuration and practice
- Quiet: 45dB average noise at 1m
- Dedicated BNC with loop for Genlock, Blackburst and tri-level sync
- Remote services and maintenance
- Backup and restore functions

## QuickMatrix 4K with Dante™ audio option



# Pulse 4K

Ref. PLS-4K



**Pulse 4K** is a 4K60 multi-layer video mixer and seamless presentation switcher, with ten inputs, two PGM outputs and one dedicated Multiviewer.

## **Pulse 4K at a glance :**

- Compact 2RU rugged chassis
- Ten inputs (8x 4K60 + 2x 1080p inputs) + two 4K60 multiplug outputs
- 2 modes : Matrix (2 PGM) or Switcher (1 PGM + 1 AUX)
- Dedicated multiviewer with resizable widgets
- Real-time 10-bit 4:4:4 video processing compliant with HDR10 & HLG
- Live Background + Up to four 4K split layers (or two 4K mixing layers)
- IP Streaming of any input or output at up to 1080p30
- Intuitive HTML5-based user interface with live source thumbnails
- Advanced audio processing and dynamic routing
- Optional analog and Dante™ audio networking card (32x32 channels)



# KEY FEATURES

10 seamless inputs including 8x 4K60 inputs and 2x 2K60 inputs

Two 4K60 PGM outputs with mirrored 12G-SDI and HDMI 2.0 plugs

## Mixer mode:

- 1 PGM output up to 4K60, with 1 live background + 2 mixing 4K layers (or 4 split layers) + 1 foreground 4K image layer

- 1 AUX output up to 1080p60

## Matrix mode:

- 2 PGM outputs up to 4K60, with 1 live image background + 1 mixing 4K layer (or 2 split layers) + 1 foreground 4K image layer per output

1 dedicated multiviewer with resizable widgets, including clocks, countdown and timers (max. resolution 2560x1600@60)

4K60 10-bit 4:4:4 processing - ultra low latency (16 msec @60Hz)

Compliant with HDR10 and HLG - Built-in SDR/HDR converters thanks to 3D Look up Tables (LUT)

Seamless crossfade on all sources

Versatile 4K connectivity: HDMI 2.0, DP1.2, 12G-SDI

IP Streaming of any input or output

8x 4K concurrent still images with alpha channel support

Advanced EDID management

Compatible with HDCP 1.4 and HDCP 2.2

Web RCS: highly intuitive HTML5-based user interface

Live video thumbnails shown on GUI

Built-in SNMPv2-MIB

Fully configurable and operable from the front panel

Advanced audio processing and dynamic routing

Innovative 'Quick Preset' feature

Custom output formats for non-standard display applications

Area of Interest feature to customize active areas of outputs

Freeze of inputs, layers and screens

Cut and Fill at input level

Easily create and recall memories on your screen and AUX outputs

Fully functional simulator for offline configuration and practice

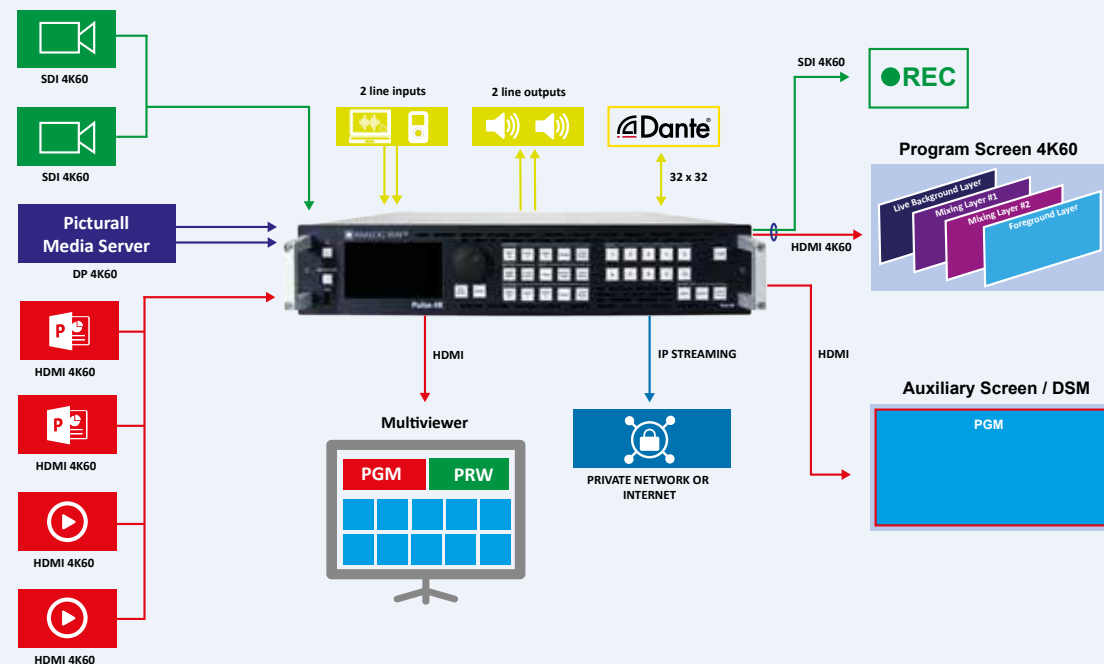
Quiet: 45dB average noise at 1m

Dedicated BNC with loop for Genlock, Blackburst and tri-level sync

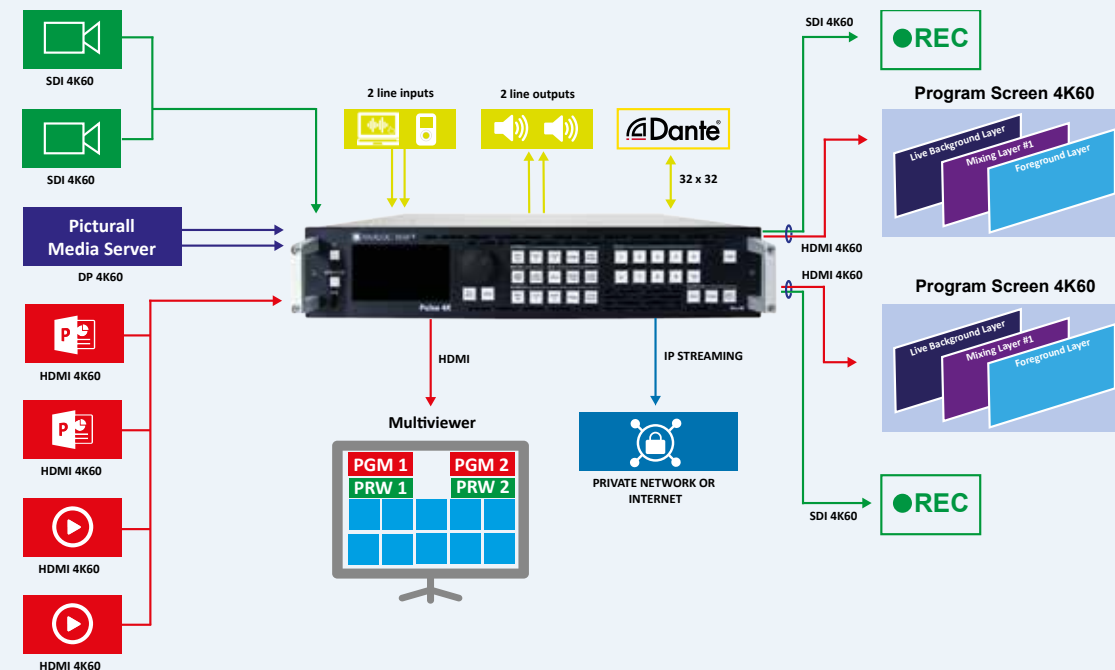
Remote services and maintenance

Backup and restore functions

## Pulse 4K - Mixer mode with Dante audio option



## Pulse 4K - Matrix mode with Dante™ audio option



# Eikos 4K

Ref. EKS-4K



**Eikos 4K** is a 4K60 multi-layer video mixer and seamless presentation switcher, with ten inputs, two PGM outputs with edge blending support and one dedicated Multiviewer.

## **Eikos 4K at a glance :**

- Compact 2RU rugged chassis
- Ten inputs (8x 4K60 + 2x 1080p inputs) + two 4K60 multiplug outputs
- 3 modes: Hard/Soft Edge (1 PGM), Matrix (2 PGM) or Switcher (1 PGM + 1 AUX)
- Dedicated multiviewer with resizable widgets
- Real-time 10-bit 4:4:4 video processing compliant with HDR10 & HLG
- Live background + up to four 4K split layers (or two 4K mixing layers)
- IP Streaming of any input or output at up to 1080p30
- Intuitive HTML5-based user interface with live source thumbnails
- Advanced audio processing and dynamic routing
- Optional analog and Dante™ audio networking card (32x32 channels)

## KEY FEATURES

10 seamless inputs including 8x 4K60 inputs and 2x 2K60 inputs

Two 4K60 PGM outputs with mirrored 12G-SDI and HDMI 2.0 plugs

### Mixer mode:

- 1 PGM output up to 4K60, with 1 live background + 2 mixing 4K layers (or 4 split layers) + 1 foreground 4K image layer

1 AUX output up to 1080p60

### Matrix mode:

2 PGM outputs up to 4K60, with 1 live background + 1 mixing 4K layer (or 2 split layers) + 1 foreground 4K image layer per output

### Edge-blending mode:

1 Hard/Soft Edge PGM (Horizontal or Vertical) with 2 outputs up to 4K60, with live background + 2 mixing 4K layers (or 4 split layers) + 1 foreground 4K image layer

1 dedicated multiviewer with resizable widgets, including clocks, countdown and timers (max. resolution 2560x1600@60)

4K60 10-bit 4:4:4 processing - ultra low latency (16 msec @60Hz)

Compliant with HDR10 and HLG - Built-in SDR/HDR converters thanks to 3D Look up Tables (LUT)

Seamless crossfade on all sources

Versatile 4K connectivity: HDMI 2.0, DP1.2, 12G-SDI

IP Streaming of any input or output

8x 4K concurrent still images with alpha channel support

Advanced EDID management

Compatible with HDCP 1.4 and HDCP 2.2

Web RCS: highly intuitive HTML5-based user interface

Live video thumbnails shown on GUI

Built-in SNMPv2-MIB

10 seamless inputs including 8x 4K60 inputs and 2x 2K60 inputs

Fully configurable and operable from the front panel

Advanced audio processing and dynamic routing

Innovative 'Quick Preset' feature

Custom output formats for non-standard display applications

Area of Interest feature to customize active areas of outputs

Freeze of inputs, layers and screens

Cut and Fill at input level

Easily create and recall memories on your screen and AUX outputs

Fully functional simulator for offline configuration and practice

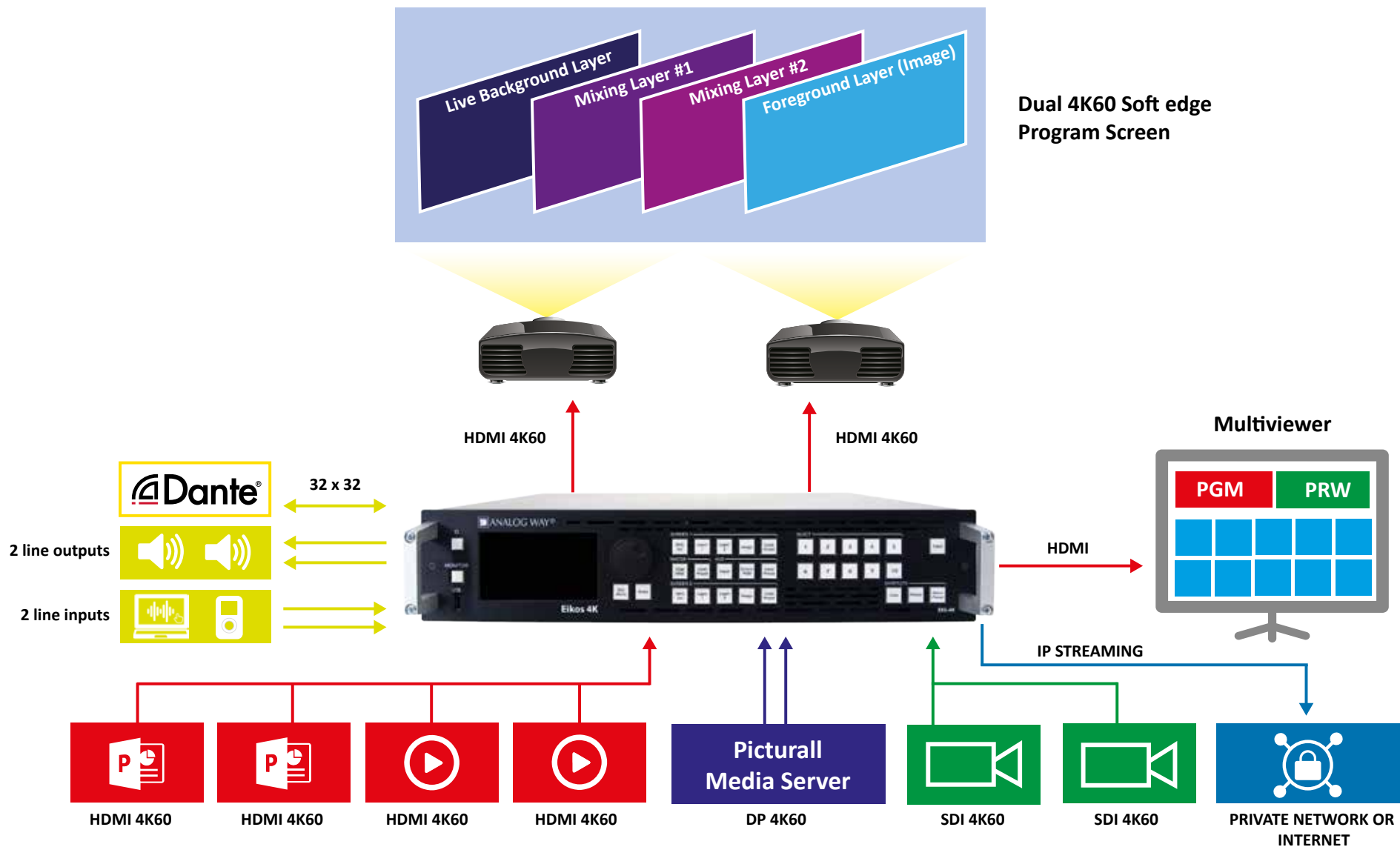
Quiet: 45dB average noise at 1m

Dedicated BNC with loop for Genlock, Blackburst and tri-level sync

Remote services and maintenance

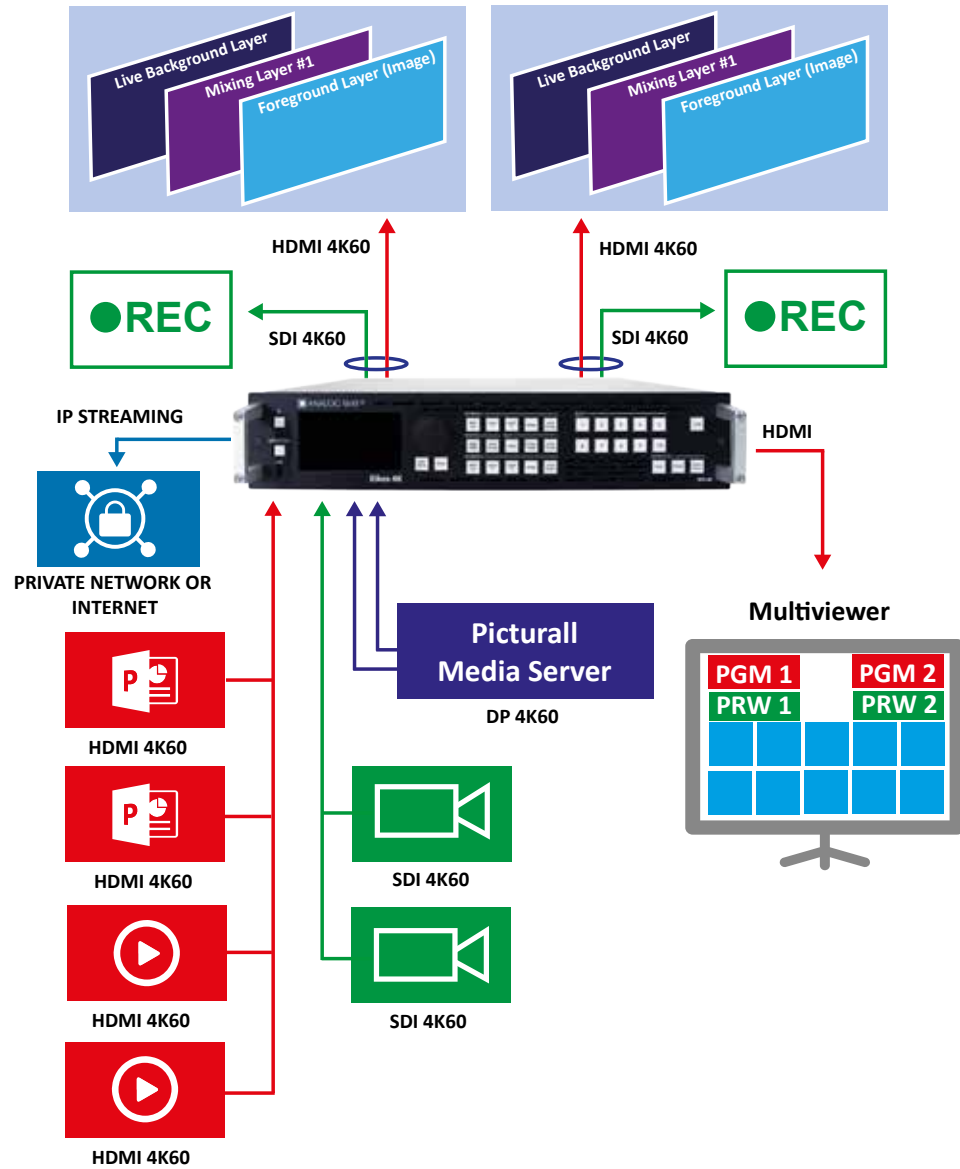
Backup and restore functions

## Eikos 4K

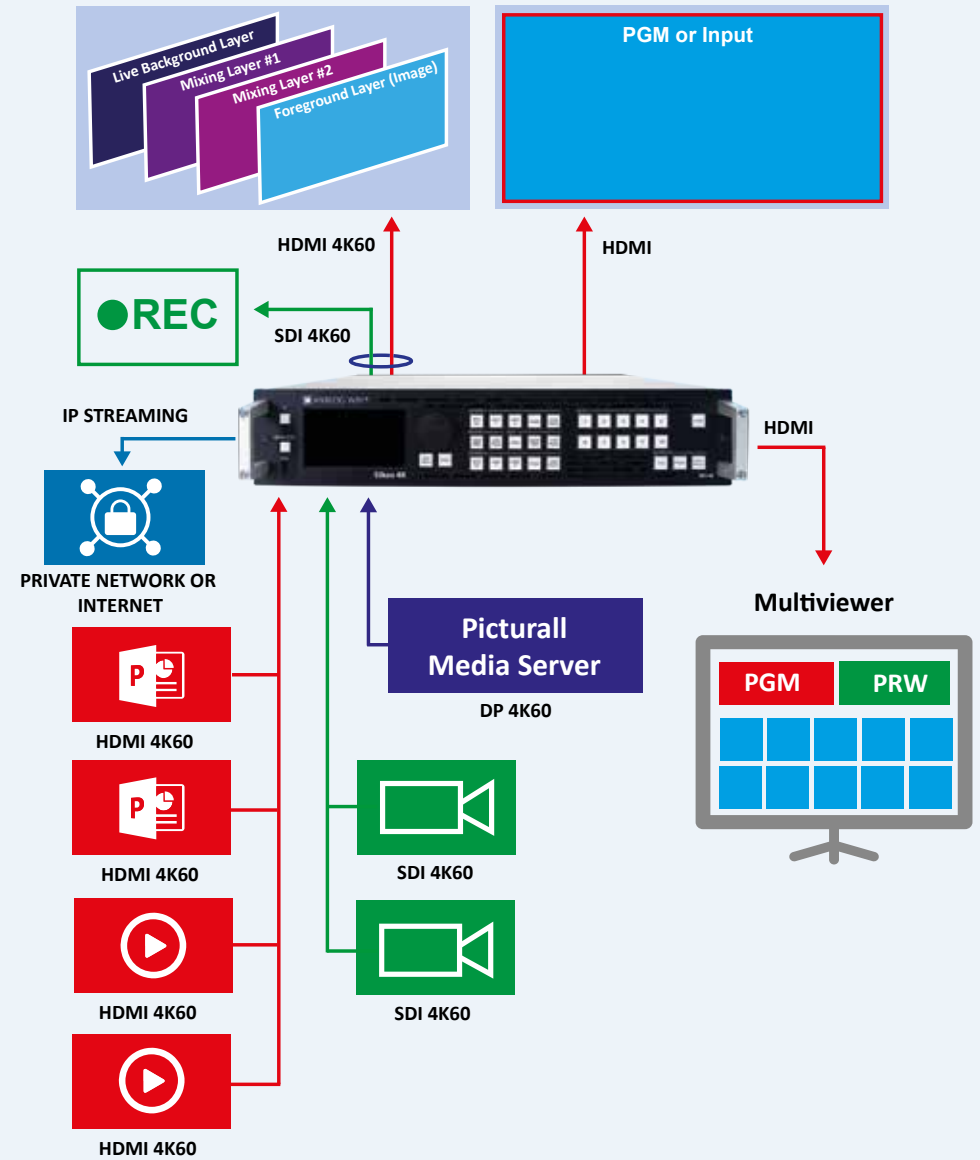
Eikos 4K - Edge-Blending mode  
with Dante audio option



## Eikos 4K - Matrix Mode



## Eikos 4K - Mixer Mode



# OVERALL COMPARISON

References	Eikos 4K	Pulse 4K	QuickMatrix 4K	QuickVu 4K
<b>INPUTS</b>	10	10	10	10
HDMI 2.0 (including 2 with loop out)	4	4	4	4
DP 1.2	2	2	2	2
12G-SDI	2	2	2	2
HDMI 1.2 / 3G-SDI (user selectable plug)	2	2	2	2
EDID <sup>(1)</sup>	✓	✓	✓	✓
HDCP 1.x <sup>(1)</sup> and 2.2 <sup>(1)</sup>	✓	✓	✓	✓
<b>OUTPUTS</b>	2	2	2	2
HDMI 2.0	1	1	1	1
12G-SDI (mirrored output)	1	1	1	1
HDCP 1.x <sup>(1)</sup> and 2.2 <sup>(1)</sup>	✓	✓	✓	✓
<b>OPERATING MODES</b>	3	2	1	1
<b>Mixer mode: 1 PGM (+ 1 AUX)</b>	✓	✓	x	✓
Background	Live or Still	Live or Still		Still
Max. 4K Mixing Layers	2	2		1
Max. 4K Split Layers	4	4		2
Still Foreground	1	1		1
<b>Matrix mode: 2 PGM</b>	✓	✓	✓	x
Background	Live or Still	Live or Still	Still	
Max. 4K Mixing Layers per Screen	1	1	1	
Max. 4K Split Layers per Screen	2	2	2	
Still Foreground	1	1	1	
<b>Hard/Soft Edge mode: 1 wide PGM</b>	✓	x	x	x
Background	Live or Still			
Max. 4K Mixing Layers	2			
Max. 4K Split Layers	4			
Still Foreground	1			
<b>AUXILIARY SCREEN<sup>(2)</sup></b>				
Format	1080p60	1080p60		1080p60
Content	Input or PGM	Input or PGM		Input or PGM
<b>MULTIVIEWER</b>				
Dedicated HDMI / SDI outputs	✓	✓	✓	✓
HDCP 1.x <sup>(1)</sup> and 2.2 <sup>(1)</sup>	✓	✓	✓	✓
Maximum format	2560x1600@60	2560x1600@60	2560x1600@60	2560x1600@60
Resizeable widgets	16	16	16	16
PGM, PRW and Inputs in Widgets	✓	✓	✓	✓
Built-in clock,timers & clock down	✓	✓	✓	✓
<b>MEMORIES</b>				
Screen Preset Memories	200	200	200	200
Master Screen Preset Memories	50	50	50	50
Multiviewer Memories	20	20	20	20
Image Slot in Library	50	50	50	50
<b>IP STREAMING</b>				
RTMP/RTMPS IP Streaming of any input, output or Multiviewer	✓	✓	✓	✓
Compatible with various Web video platform (Youtube, Facebook, Twitch.tv...)	✓	✓	✓	✓

(1) On compliant connectors

(2) Availability depends of Operating Modes

# OVERALL COMPARISON

References	Eikos 4K	Pulse 4K	QuickMatrix 4K	QuickVu 4K
Compatible with local clients, such as OBS software	✓	✓	✓	✓
Video encoded in H.264 at up to 1080p30, up to 6Mbps	✓	✓	✓	✓
Embed any Audio stereo channels (AAC encoding) at 128kbps	✓	✓	✓	✓
<b>IMAGES</b>				
4K concurrent image set for foreground	4	4	4	4
4K concurrent image set for background	4	4	4	4
Alpha-channel support	✓	✓	✓	✓
Capture from Live inputs/ outputs	✓	✓	✓	✓
Multi-file download via WebRCS	✓	✓	✓	✓
<b>AUDIO</b>				
De-embed audio channels per inputs	✓	✓	✓	✓
Advanced Audio Processing: Level, Balance, Mute, Delay...	✓	✓	✓	✓
Embed audio channels per outputs	✓	✓	✓	✓
Fix or Dynamic routing	✓	✓	✓	✓
Optional Analog and Dante™ card - 2x analog stereo mini jack in and out - 32x32 Dante™ Channels @ 48kHz"	✓	✓	✓	✓
<b>QUICK PRESET FUNCTION</b>				
3 modes: Black, Image or Master Preset	✓	✓	✓	✓
Audio routing configurable	✓	✓	✓	✓
<b>PROCESSING</b>				
HDR compliant with HDR10 and HLG <sup>(1)</sup>	✓	✓	✓	✓
Custom formats and AOI	✓	✓	✓	✓
<b>TRANSITION &amp; EFFECTS</b>				
True A/B mix effect	✓	✓	✓	✓
Layer border and color, with shadow	✓	✓	✓	✓
Luma and Chroma keying	✓	✓	✓	✓
Cut and Fill at input level	✓	✓	✓	✓
Color effects (B&W, Sepia, Negative...)	✓	✓	✓	✓
<b>CONTROL</b>				
<b>Web RCS , with HTTP / HTTPS connection</b>	✓	✓	✓	✓
<b>Fully Featured Front Panel</b> , with large color TFT LCD display (480x272 pixels)	✓	✓	✓	✓
<b>Shot Box² / Control Box²</b>	✓	✓	✓	✓
<b>RC400T event controller</b>	✓	✓	✓	✓
SKAARHOJ Air Fly Pro	✓	✓	✓	✓
Rest API and TCP Command	✓	✓	✓	✓
Crestron Driver	✓	✓	✓	✓
<b>AW VideoCompositor for Midra 4K</b>	✓	✓	✓	✓
Companion and Universe solutions	✓	✓	✓	✓
TSL protocols	✓	✓	✓	✓
<b>PLATFORM</b>				
Rack width	19"	19"	19"	19"
Enclosure	2 RU	2 RU	2 RU	2 RU
Rack mount kit supplied	✓	✓	✓	✓
Dedicated BNC with loop for Genlock	✓	✓	✓	✓



### **Analog Way SAS - Headquarters**

Tel.: +33 (0)1 81 89 08 60  
2/4 rue Georges Besse  
92160 Antony  
FRANCE

### **Analog Way Inc.**

Tel.: +1 (678) 487 6644  
Toll free: +1 855 353 4988  
3047 Summer Oak Place  
Buford, GA 30518  
USA

### **Analog Way Limited**

Tel.: +852 3960 7183  
Office 1756, 17th Floor,  
700 Nathan Road,  
Kowloon, Hong Kong

### **Analog Way ME**

Tel.: +971 50 401 3577  
G043 - 7WA  
Dubai Airport Free Zone  
P.O. Box 371977  
Dubai - UAE



For a list of all other office locations,  
please visit [www.analogway.com](http://www.analogway.com)

Connect with us on



[info@analogway.com](mailto:info@analogway.com)